

## Fine & Important European Furniture, Fine Art & Antiques, Thu, 31 March 2022 9:30

- 1 Aster Richard Chilton Corbould (c.1812-1882), Highland cattle in a landscape, oil on board, signed to lower right corner, 29 cm x 39 cm in a giltwood frame.  
Private collection. **£400-600**



- 2 19th-century school, an oil on panel portrait of Elizabeth Woodville, copy of the original dating 1437, indistinctly signed to lower right corner, 23.4 cm x 17 cm, label with inscription verso.  
Property of a lady. **£150-250**



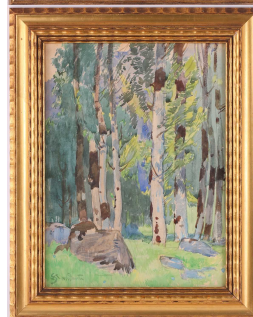
- 3 Alexander Young (fl.1883-1920), 'Entering Harbour', seascape, oil on canvas, signed to lower left corner, 29.5 cm x 49.5 cm in a gilt frame.  
Private collection. Phillips & Sons (Marlow) gallery label verso **£300-500**



- 4 19th-century school, a head and shoulders portrait of a gentleman, unsigned oil on panel, 29.5 cm x 22 cm in a gilt frame. **£150-250**



- 5 Hans Sandreuter (1850-1901) Swiss, woodland scene, watercolour, signed to lower left corner, 35 cm x 25.5 cm glazed in a gilt frame.  
Private collection. **£200-300**

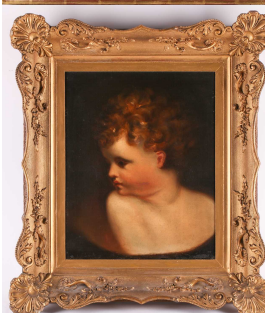


## Fine & Important European Furniture, Fine Art & Antiques, Thu, 31 March 2022 9:30

- 6 † Diane Elizabeth Flynn (b.1939), 'The First Lesson', acrylic on canvas, signed to lower left corner, 49 cm x 39 cm in a painted wood frame.  
Private collection **£600-800**



- 7 Manner of Sir Joshua Reynolds (1723-1792), a head and shoulders portrait of a boy as Cupid, oil on canvas, 41 cm x 33 cm in a giltwood frame. **£300-500**



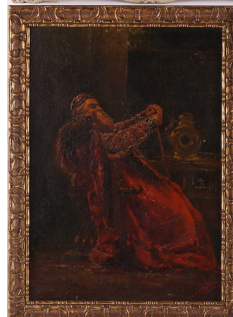
- 8 19th-century school, a study of a Friesian cow in a landscape, oil on canvas, 24.5 cm x 34.5 cm in a gilt frame. **£200-300**



- 9 Dorothy Patchett (20th century), a still life study of spring flowers in a vase, oil on canvas, signed, 65 cm x 54 cm in a wooden frame. **£200-300**



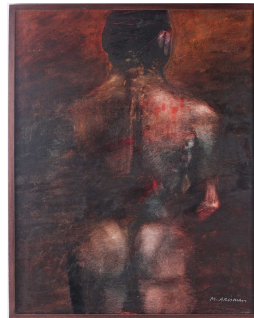
- 10 Charles Salin (1889-1919) a possible scene from the opera Boris Godunov, oil on canvas, signed to lower right corner, 46 cm x 32.5 cm in a gilt frame. **£200-300**





## Fine & Important European Furniture, Fine Art & Antiques, Thu, 31 March 2022 9:30

- 11 Marshall Arisman (b.1937) American, 'Tribal Portrait', male nude, oil on board, signed to lower-left corner, 73 cm x 58 cm. **£600-800**



- 12 George Enslin (1919-1972) South African, a Kenyan landscape, oil on panel, 49.5 cm x 59.5 cm in a painted wooden frame. **£400-600**



- 13 † Tristram Hillier RA (1905-1983), a still life study, 'Apples & Peaches with a Tin Jug', tempera on board, signed and dated '62, 17 cm x 24.5 cm in a gilt frame. Private collection, 'Tooth 12' chalk mark verso, with paper label. **£5,000-6,000**



- 14 † Richard Kingston (1922-2003), 'Outskirts', oil on board, signed to lower left corner, 21.5 cm x 60 cm in a wooden frame. **£600-800**



- 15 Early 20th century English School, a country landscape, oil on canvas, 49 cm x 75 cm in a gilt frame. **£200-300**



## Fine & Important European Furniture, Fine Art & Antiques, Thu, 31 March 2022 9:30

- 16 † Gerald Davis (1935-2008), 'Forging Ahead', 1974, oil on board, signed and dated to lower left corner, 15 cm x 20 cm, glazed in a chromed frame.  
Barrenhill Gallery, Dublin label verso **£200-300**



- 17 19th-century European school, a pair of watercolours, figures in interior scenes, each signed with apocryphal Japanese characters, 27 cm x 37 cm glazed in ebonised frames. (Qty: 2) **£250-350**



- 18 † James Longueville (b.1942) British, 'Oaks in the Snow, Cheshire', pastel landscape, signed to lower right corner, 27 cm x 37.5 cm framed and glazed.  
Sarah Samuels Gallery label verso **£200-300**



- 19 Charles Bartlett (1921 - 2014) 'The Slipway', signed in pencil, watercolour, 32.5cm x 44cm **£300-500**



- 20 Chi Ming (b.1984) Chinese, 'Chain', oil on canvas, 50 cm x 50 cm in an ebonised frame.  
Exhibited in the 'Tasting Freedom's Temperature' dual exhibition (with J S Tan), Beijing 2012. Purchased by the vendor following the exhibition, with original receipt present. Literature: 'Testing Freedom's Temperature, Chi Ming & JS Tan, Page 19, Atkins & Ai Gallery, Beijing'. **£1,000-1,500**



## Fine & Important European Furniture, Fine Art & Antiques, Thu, 31 March 2022 9:30

- 21 † Elizabeth Jane Lloyd (1928-1995) British, 'Pansies in a Lustre Jug', still life study, oil on canvas, 28.5 cm x 38 cm in a wooden frame.  
From the family of the artist. She was an artist and teacher. As an artist she worked in oils and watercolours, produced murals and also painted film sets. Contemporary of Mary Fedden  
**£200-300**



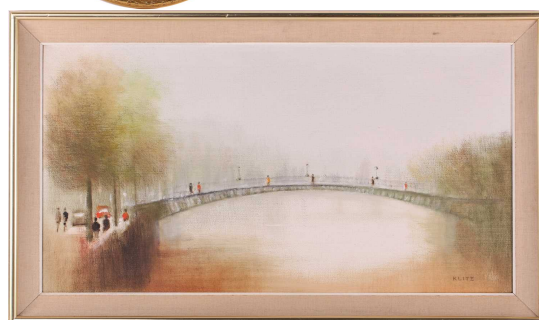
- 22 19th century school, a large half-length portrait of a gentleman wearing a red sash, unsigned oil on canvas, 75 cm x 62 cm in an ornate carved giltwood frame. **£200-300**



- 23 Late 19th-century European school, a large oval pastel portrait of a lady, monogrammed, 66.5 cm x 54 cm glazed in a giltwood frame. **£200-300**



- 24 † Anthony Robert Klitz (1917-2000), 'Halfpenny Bridge, Dublin', oil on canvas, signed to lower right corner, 40 cm x 72 cm in a gilt frame. **£400-600**



- 25 Robert Boudry (1878-1961) Belgian, 'Antwerp', 1930, street scene, oil on panel, signed to lower right corner, also verso with title, 59.5 cm x 47 cm in a wooden frame. **£100-200**





## Fine & Important European Furniture, Fine Art & Antiques, Thu, 31 March 2022 9:30

- 26 Léon Schwartz-Abrys (1905-1990) French, fishing boats in a harbour, impasto oil on board 52 cm x 64 cm in a wooden frame. **£250-350**
- 27 Follower of William Shayer (1787-1879), travellers and horses resting on a path, unsigned oil on canvas, 69 cm x 89 cm in a giltwood frame. Private collection, North London deceased estate **£500-800**
- 28 19th-century school, two monochrome watercolours, a landscape and a seascape, each bearing the monogram 'G.S.' and dated 1875, 22 cm x 33 cm framed and glazed. (Qty: 2) **£120-180**
- 29 † Elizabeth Jane Lloyd (1928-1995) British, a still study of a vase of flowers in a landscape, oil on canvas, monogrammed to lower right corner, 50 cm x 60 cm, together with another by the same hand, 59.5 cm x 44.5 cm, each in green-painted wooden frames. (Qty: 2)  
From the family of the artist. She was an artist and teacher. As an artist she worked in oils and watercolours, produced murals and also painted film sets. Contemporary of Mary Fedden **£300-500**
- 30 19th-century school, portrait of a gentleman, unsigned oil on canvas, 75 cm x 62 cm in a gilt frame. **£200-300**



## Fine & Important European Furniture, Fine Art & Antiques, Thu, 31 March 2022 9:30

- 31 Pietro Gabrini (1856-1926) Italian, a couple conversing beside the water's edge, oil on canvas, signed to lower left corner, 84 cm x 56 cm in a giltwood frame.  
Private collection, North London deceased estate **£300-500**



- 32 C.L. Brierley, a late 19th-century watercolour, 'Design for Hillside Church', 17.5 cm x 31.5 cm, framed and glazed. **£150-250**



- 33 19th century Continental School, a full-length portrait of a Medieval dressed woman holding three arrows, possibly St Philomena, oil on board, 37 cm x 16 cms, and Continental School, young woman scattering flowers, possibly allegory of Spring, oil on canvas, 19 cm x 12.5 cm, each in a gilt frame.  
(Qty: 2) **£200-300**



- 34 19th-century school, portrait of a young gentleman, unsigned oil on canvas, 74.5 cm x 62.5 cm in a gilt frame. **£200-300**

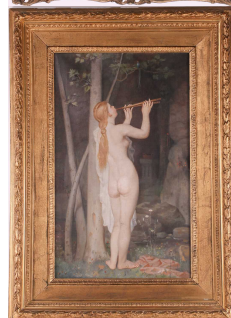


- 35 Frederick Edward Joseph Goff (1855-1931), ships at sunset, watercolour, signed to lower right corner, 20 cm x 31 cm framed and glazed. **£200-300**



## Fine & Important European Furniture, Fine Art & Antiques, Thu, 31 March 2022 9:30

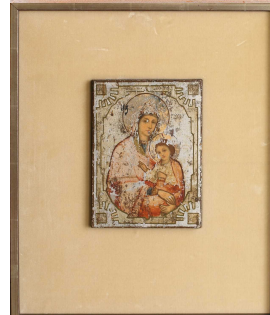
- 36 After George Braques (1882-1963), 'Compotier d'Oranges', limited edition lithographic print, signed and numbered 105/200, 36.5 cm x 54 cm, mounted in an unglazed frame. **£500-700**
- 37 † Andrew Kennedy (b.1941), HMS Victory, flanked by other ships, oil on board, signed to lower right corner, together with an other similar by the same hand, 26 cm x 44.5 cm in gilt frames. (Qty: 2) **£200-300**
- 38 Swiss School (late 19th century), a blonde nymph playing pipes to a figure of Pan, oil on canvas, 70.5 cm x 42.5 cm in a gilt frame. **£600-800**
- 39 J H Key (19th century), 'View at Mahabalipuram', watercolour, 24.5 cm x 38.5 cm framed and glazed. Private collection. Martyn Gregory gallery label verso, from the 'Trade Routes to the East Exhibition', 1998, Catalogue 72, No.57. **£200-300**
- 40 † John Burne (b.1940), 'Looking Back', pen, ink & watercolour, signed to right corner, 10 cm x 11.5 cm framed and glazed. Private collection. **£200-300**





## Fine & Important European Furniture, Fine Art & Antiques, Thu, 31 March 2022 9:30

- 41 Lucius Crowell (1911-1998) American, 'Market Basket with Champagne', a large still life study, oil on canvas, signed to lower left corner, signed and titled verso, 75 cm x 95 cm in a gilt frame.  
Private collection, deceased estate **£300-500**
- 42 William Shayer (1787-1879) British, 'Fisherfolk on a Devonshire Beach', large oil on canvas, signed, 64.5 cm x 89 cm in a giltwood frame.  
Private collection, North London deceased estate. Devonshire Gallery label verso, Stock No. P3030. Copy of purchase receipt present, dated 1981. **£1,000-1,500**
- 43 Follower of Filippino Lippi (1457-1504), a depiction of the Madonna and Child with attendant angels, in a landscape, oil on canvas, 50 cm x 43.5 cm in a giltwood frame.  
Private collection, no written or anecdotal provenance available. Viewing recommended. **£3,000-5,000**
- 44 † Elizabeth Jane Lloyd (1928-1995) British, a floral still life study, oil on panel, monogrammed to lower right corner, 39.5 cm x 49.5 cm in a wooden frame.  
From the family of the artist. She was an artist and teacher. As an artist she worked in oils and watercolours, produced murals and also painted film sets. Contemporary of Mary Fedden **£200-300**
- 45 19th-century Russian school, an icon painted on wood, Madonna and child, 22.5 cm x 16.5 cm, mounted to a contemporary frame, with original purchase receipt and catalogue from 'Icons From Jerusalem'. **£150-200**



## Fine & Important European Furniture, Fine Art & Antiques, Thu, 31 March 2022 9:30

- 46 19th century Swiss School (indistinct signature verso), a young woman slave proving her innocence by not being attacked by tigers, oil on canvas, 79 cm x 47 cm in an ebonised frame. **£200-300**



- 47 Hans Sandreuter (1850-1901) Swiss, a woodland scene, oil on canvas, signed and dated 1937 to verso, 60 cm x 43 cm in a gilt frame. **£300-500**



- 48 Adolphus Knell (act.1860-1890), 'Shipping in the Thames Estuary', oil on panel, signed to lower right corner, 14.5 cm x 22 cm glazed in a gilt frame. Purchase receipt present, Vicarage Galleries, Henley on Thames, 1997 **£300-500**



- 49 20th century British School, a still life study of fruit, oil on board, indistinctly signed and dated '59, 20 cm x 24 cm in a gilt frame. **£150-250**



- 50 Vincenzo D'Esposito (1886-1946) Maltese, three watercolours, views of Valetta in Malta, each signed, 11 cm x 23 cm, framed and glazed. (Qty: 3)  
Purchased by the vendor's Grandfather, when on military service in Malta, c.1918 **£500-700**



## Fine & Important European Furniture, Fine Art & Antiques, Thu, 31 March 2022 9:30

- 51 19th century Continental school, a portrait of a young woman, unsigned oil on canvas, 59 cm x 48.5 cm in a giltwood frame. **£150-250**



- 52 Manner of John Flaxman (1755-1826) British, Athena [Minerva] presenting her shield to Perseus, watercolour, 20.5 cm x 20.5 cm framed and glazed. **£120-180**



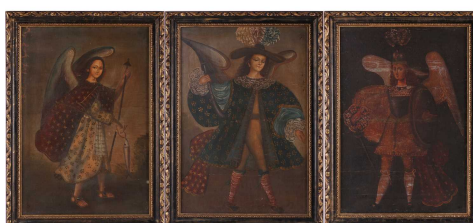
- 53 19th-century school, a portrait of the Reverend Thomas Raffles (1788-1863), named verso, oil on canvas, 17.5 cm x 22.5 cm, framed & glazed. Property of a lady. **£150-250**



- 54 G de Santis, (19th/20th century), an Italian townscape, oil on canvas, signed to lower right corner, 30.5 cm x 21.5 cm in a gilt frame, housed in a wooden, glazed frame. **£300-500**



- 55 Late 19th/early 20th century Cuzco/Peruvian school, three folk paintings on canvas, depicting the Archangels Gabriel, Michael and Tobias, each 56 cm x 38 cm glazed in ebonised frames. (Qty: 3) **£1,500-2,500**





## Fine & Important European Furniture, Fine Art & Antiques, Thu, 31 March 2022 9:30

- 56 George Knight (19th century), 'Off the Scottish Coast', seascape, oil on canvas, 39 cm x 28.5 cm in a gilt frame. Private collection. Phillips & Sons (Marlow) gallery label verso **£200-300**



- 57 Cornelis Van Essen (1700-1757) Dutch, an equestrian hunting scene, oil on board, 25.5 cm x 33.5 cm in a gilt frame. Private collection. Ex Christie's, 14.10.99 (label verso) **£800-1,200**



- 58 † Breur Tidman (b.1939), 'Three Figures', 1994, acrylic on card, signed to lower left corner, 41 cm x 45.5 cm framed and glazed. Private collection. School House Gallery label verso **£200-300**



- 59 Hans Sandreuter (1850-1901) Swiss, a lady sitting beneath a blossom tree, village beyond, signed and dated 1900, large oil on canvas, 90 cm x 135 cm in a moulded frame. **£2,000-3,000**



- 60 † Giovanni Panza (1894-1989) Italian, a peasant girl collecting firewood, oil (probably) on canvas, signed to lower right corner, 39.5 cm x 28 cm in a gilt, housed in a larger, glazed wooden frame. **£300-500**



## Fine & Important European Furniture, Fine Art & Antiques, Thu, 31 March 2022 9:30

- 61 20th-century school, a fashion study of a woman with a parasol, watercolour, dated 1925 (indistinctly signed), 54 cm x 34 cm framed and glazed. **£200-300**



- 62 William Frederick Hulk (1852-c.1906), two studies of cows in a field, oils on canvas, each signed to the lower right corner, 29 cm x 21.5 cm in pierced giltwood frames. (Qty: 2)  
Private collection. Purchase receipt and documents present, dated 1971, from The Old Customs House, Lymington. **£600-800**



- 63 Eric Chan (b.1975), Malaysian, red flowers, a very large on canvas, signed verso and dated 2004, 120 cm x 180 cm. Bought by the vendor in the Far East and brought home **£1,500-2,000**



- 64 Attributed to Thomas Shotter Boys (1803-1874), a pair of landscapes, possibly Cumbria, oils on canvas, each 19 cm x 39 cm in gilt frames. (Qty: 2) **£200-300**

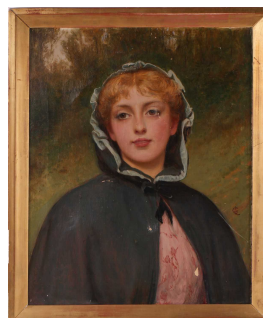


- 65 Edward King Redmore (1860-1941), boats in calm waters, close to a quay, oil on panel, signed to lower right corner, 30 cm x 50 cm in a gilt frame. **£200-300**



## Fine & Important European Furniture, Fine Art & Antiques, Thu, 31 March 2022 9:30

- 66 Charles Sillen Lidderdale (1831-1895), portrait of a young woman, oil on canvas, monogram to right edge, 52 cm x 41.5 cm in a gilt frame. **£700-1,000**



- 67 † Hans Arnold Zeller (1897-1983) Swiss, landscape, signed and dated 1927, oil on artists board, 23 cm x 33 cm **£200-300**



- 68 Henri Tebbitt (1852-1926) Australian, a view of Windsor Castle, watercolour, signed to lower right corner, 31 cm x 57.5 cm, framed and glazed. **£100-150**



- 69 19th century British School, cattle in a landscape, oil on canvas with 'EL' monogram, together with another by the same hand, a fisherman by a pond, each 60 cm x 50 cm in a gilt frame. (Qty: 2) **£250-350**



- 70 † Tom Cullen (1934-2001), 'Merchants Arch', oil on canvas, signed to lower left corner, 33.5 cm x 24 cms glazed in a wooden frame. **£200-300**





## Fine & Important European Furniture, Fine Art & Antiques, Thu, 31 March 2022 9:30

- 71 C Musso, 20th century, an Italian street scene, oil on panel, signed to lower right corner, 28.5 cm x 22.5 cm in a gilt frame. **£200-300**



- 72 Chi Ming (b.1984) Chinese, 'Lovers', oil on panel, 50 cm x 50 cm in an ebonised frame. Exhibited in the 'Tasting Freedom's Temperature' dual exhibition (with J S Tan), Beijing 2012. Purchased by the vendor following the exhibition, with original receipt present. Literature: 'Testing Freedom's Temperature, Chi Ming & JS Tan, Page 14, Atkins & Ai Gallery, Beijing'. **£1,000-2,000**



- 73 Harry Sutton Palmer 9185401933), 'Egyptian Street Scene', watercolour, signed to lower left corner, 33.5 cm x 23.5 cm glazed in a gilt frame. Private collection. Laurence Oxley gallery label verso **£300-500**



- 74 19th century school, a portrait of a finely dressed lady, unsigned oil on canvas, 22 cm x 17 cm in a contemporary gilt frame. **£150-250**



- 75 Contemporary, a large abstract expressionist work, acrylic on canvas, indistinctly signed and dated '92, 151 cm x 121 cm, framed. **£300-500**



## Fine & Important European Furniture, Fine Art & Antiques, Thu, 31 March 2022 9:30

- 76 William Shayer (1787-1879) British, 'Harvest Time', large oil on canvas, signed, 69.5 cm x 89.5 cm in a giltwood frame.  
Ex Phillips, Fine Victorian & Colonial Paintings, 25th July 1983 (lot 192). Private collection, deceased North London estate. Alexandra Gallery, Harrogate label verso. Letter present, to the vendor, from Brian Stewart, co-author of 'The Shayer Family of Painters', in which he details his opinion on the authenticity of the work, with caveats on the restoration that has taken place (see photos). **£800-1,200**



- 77 Sir Alfred East RA RBA (1844-1931), 'A Weedy Corner', watercolour, signed to lower right corner, 34 cm x 44 cm, together with Edmund Morison Wimperis RI (1835 - 1900), coastal landscape with windmill, watercolour, monogram to lower right corner, 27 cm x 40 cm, each framed and glazed. (Qty: 2) **£200-300**



- 78 † Charles Oakley (1925-2008) British, 'Fortune Telling', mixed media on panel, 21.5 cm x 44 cm, glazed in a deep box frame, (33 cm x 56 cm x 6.5 cm full dimensions).  
Purchased by the vendor in 1989, from Coach House Contemporary Art, Kirby Lonsdale. Receipt present. **£3,000-5,000**



- 79 Lillian Woodcock (act. 1891-1921), landscape, Llandudno, North Wales, watercolour, signed to lower right corner, 22.5 cm x 34 cm framed and glazed. **£150-250**



- 80 William Shayer (1787-1879) British, a coastal landscape with figures on the shore, oil on panel, signed to lower left corner, 30 cm x 36 cm in a giltwood frame.  
Private collection **£1,000-1,500**



## Fine & Important European Furniture, Fine Art & Antiques, Thu, 31 March 2022 9:30

- 81 † Agnes Miller Parker (1895-1980), 'Pericles', artist proof woodcut print, pencil signed and dated '59, 18.8 cm x 10.7 cm framed and glazed.  
Private collection. **£150-250**



- 82 John Buckland Wright (1897-1954), 'Bord du Lac', limited edition woodcut, signed and dated 1931, numbered 15/30, 13 cm x 17.5 cm with margins, framed and glazed.  
Private collection. Wolseley Fine Arts label verso **£200-300**



- 83 After Graham Laidler Pont (1908-1940), 'Sunlight and Shadow', colour print from Punch Magazine, 1938, 24.8 cm x 18.5 cm, together with a print after Felix Topolski (1907-1989), 'Outside Westminster Hall at the Opening of the Law Courts', 20.5 cm x 32 cm and a 19th century engraving, possibly Beswick, 14.5 cm x 11 cm, each framed and glazed. (Qty: 3)  
**£100-200**



- 84 † Josef Herman (1911-2000), 'In the Cafe', pen & watercolour, signed verso, 22 cm x 17 cm framed and glazed, together with catalogues and associated papers. **£300-500**



- 85 † Blair Hughes-Stanton (1902-1981), 'Gentian' [illustration for DH Lawrence: The Ship of Death and Other Poems), wood engraving, signed and dated 1933, numbered 3/12, 17 cm x 10.7 cm, together with Douglas Percy Bliss (1900-1984), 'The Auld Kirk', signed and numbered 3/50, 6 cm x 10.5 cm with margins, each framed and glazed. (Qty: 2) **£150-250**





## Fine & Important European Furniture, Fine Art & Antiques, Thu, 31 March 2022 9:30

- 86 A large original 1964 'My Fair Lady' colour offset lithograph by Bob Peak with certificate of authenticity, 156 cm x 111 cm.  
**£100-200**



- 87 18th-century Italian school, a scene depicting the Madonna and child with attendants, drawing on paper, 23.5 cm x 16 cm framed and glazed. **£120-180**



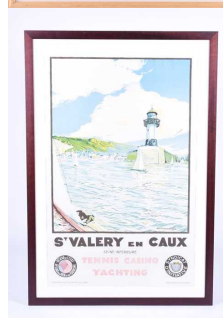
- 88 † Hans Feibusch (1898-1998) German, a pencil portrait of the artist's grandmother, 24 cm x 18 cm, framed and glazed, together with a book about the artist.  
This picture is illustrated with the accompanying book as #15 on page 56. **£250-350**



- 89 † Hans Feibusch (1898-1998) German, a preparatory sketch, pastel and charcoal of a young Christ in billowing robes, 61 cm x 43 cm framed and glazed, together with a book about the artist.  
This work closely relates stylistically to illustration examples in chapter IV "preparatory work for murals and paintings" in the book. **£250-350**



- 90 \*Withdrawn\*



## Fine & Important European Furniture, Fine Art & Antiques, Thu, 31 March 2022 9:30

- 91 Graham Laidler Pont (1908-1940), 'We must on no account...', an original pen and ink cartoon, originally published in Punch Magazine, 21st October 1936, 26.5 cm x 22.5 cm framed and glazed.  
Rae-Smith Gallery label verso, private collection. **£1,500-2,500**



- 92 Adriaan Lubbers (1892-1954) Dutch, a New York cityscape, with a busy street and railway amongst tall buildings, charcoal on paper, signed to bottom edge and dated 1928(?), 60 cm x 34 cm, together with a lithographic print after the same hand, 56 cm x 41 cm, each framed and glazed. (Qty: 2)  
Obtained by the family of the vendor following the artist's death, and retained by descent. **£800-1,200**



- 93 After William Russell Flint (1880-1969), 'Sara', limited edition print, pencil signed by the artist with Fine Art Trade Guild blindstamp, 39.5 cm x 63 cm with margins, framed and glazed. **£250-350**



- 94 A Japanese six-panel paper byobu screen, Edo/Meiji period, painted in raised lacquer colours with a fenced garden containing chrysanthemum, blossom trees and Manchurian cranes on a gilt ground, within silk brocade borders and red lacquered frames. 375 cm long x 172.5 cm high; and a three panel screen, decorated with chrysanthemums, 182cm high, 138cm wide  
Private collection **£300-500**



- 95 Alexandra Gardner (b.1945), self portrait, pastel on paper, signed and dated '95, 23.5 cm x 17.6 cm framed and glazed. **£150-250**



## Fine & Important European Furniture, Fine Art & Antiques, Thu, 31 March 2022 9:30

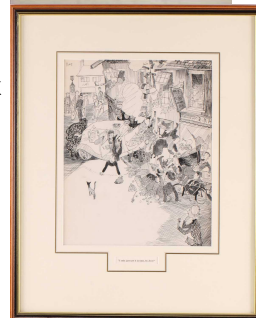
- 96 Graham Laidler Pont (1908-1940), 'B-by Jove...', an original pen and ink cartoon, (believed unpublished), signed and dated 1933, 26.5 cm x 35 cm framed and glazed.  
Rae-Smith Gallery label verso, private collection. **£1,500-2,500**



- 97 A large early 20th century French advertising poster, for 'Végétaline', 158 cm x 107 cm, glazed in a contemporary frame. **£100-200**



- 98 Graham Laidler Pont (1908-1940), 'I Only Just Saw it in Time, By Jove', an original pen and ink cartoon, signed, originally published in Punch Magazine, November 21st 1934, 32.5 cm x 26 cm framed and glazed.  
Private collection **£2,000-3,000**



- 99 After John Trumbull (1756-1843) The Signing of the Declaration of Independence, a steel plate engraving by Asher Brown Durand (1796-1886). 59 cm x 85 cm Together with a coloured map of "Roma" (later imprint/reprint) (Qty: 2) **£100-200**



- 100 † Felix Topolski (1907-1989), Polish/British, 'Three Judges', print, 21 cm x 29.5 cm framed and glazed. **£100-200**



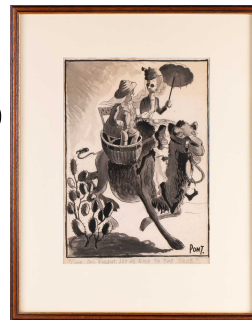


## Fine & Important European Furniture, Fine Art & Antiques, Thu, 31 March 2022 9:30

- 101 † David Shrigley (b.1968) British, a set of four off-set 'Vegetable Series' lithographs on paper, comprising 'If You Don't Like Tomatoes..', 'You Win This Mushroom', 'The Moment has Arrived...' and 'They Were Too Long', each 80 cm x 60 cm, unframed. (Qty: 4) **£300-500**



- 102 Graham Laidler Pont (1908-1940), 'Come, Mrs Vincent, Let us Rise to the Trot', pen, ink and wash, signed, 37 cm x 26 cm framed and glazed.  
Rae-Smith Gallery label verso, private collection. **£1,000-1,500**



- 103 After Gertrude Hermes (1901-1983) and John Nash (1893-1977), two framed wood engravings from 'Tobit and the Fish' and 'Judith', 1929, Curwen Press, each 21.5 cm x 13.5 cm, together with an illustration by William Blake for Thornton's Virgil, 1821, from an electrotype of the original woodblock, 5.5 cm x 7.7 cm and a further woodcut print, each framed and glazed. (Qty: 3) **£150-250**



- 104 † Marc Chagall (1887-1985) French/Russian, 'La Plafond de L'Opera de Paris', lithograph, published by Andre Jauret, Monte Carlo, 1965, 30.5 cm squared, framed and glazed. **£500-700**



- 105 After Albert Joseph Moore, 'The Dreamers', a contemporary oleograph on canvas, 72 cm x 128 cm in a gilt frame. **£150-250**



## Fine & Important European Furniture, Fine Art & Antiques, Thu, 31 March 2022 9:30

- 106 † Gertrude Hermes (1901-1983), 'Valley of Humiliation', No.05, woodcut on paper, pencil signed and dated 1928, 23.5 cm x 18 cm with margins, together with John Buckland-Wright, (1897-1954), 'The Moonbeam' [for Endymion Page], c. 1945, 21 cm x 11.3 cm, each framed and glazed. (Qty: 2) **£200-300**



- 107 A pair of Chinese bowls, Republic Period, painted with lotus flowers between a border of alternating red and blue bats and false gadroons and gilt rims, six character Tongzhi mark, 9.7cm diameter, 6.5cm high **£300-400**



- 108 A Victorian ivory and silver mounted page turner, Birmingham 1892, with rope twist carved horn handle and ivory blade, 34.5cm **£100-150**



- 109 A Kamasan Balinese Star Calendar Palelitangan, lacquer colours on linen, executed in two joined sections with figures text and symbols, framed. 133 cm x 166 cm **£200-300**



- 110 A Chinese carved rock crystal snuff bottle with citrine style domed stopper with a spoon the body of flattened form carved with writhing dragons in the round. bearing an apocryphal four-character mark for Qianlong to the base. 5.5 cm wide x 9.5 cm high **£150-200**



## Fine & Important European Furniture, Fine Art & Antiques, Thu, 31 March 2022 9:30

- 111 A Sino-Tibetan gilt-bronze figure of Palden Lhamo riding sideways on a mule holding a kapala in her left hand above a base of mountains cloaked in swirling clouds. 23.5 cm long x 12 cm deep x 34 cm high **£300-400**



- 112 A Japanese bronze spill vase, modelled as a leaping carp, on a rectangular green marble base, early 20th century, 39 cm high x 35 cm wide. **£200-300**



- 113 A pair of Chinese famille verte Qilin plates, Qing, 19th century, the beast facing right with smoke issuing from its mouth beneath a bound scroll, flanked by viewing rocks and bamboo with small rodents below, within a foliate borders on an ammonite scroll ground with vignettes, a chocolate brown rim, 24.5cm dia **£300-500**



- 114 A Tibetan white metal hanging censer, the lid with foliate finial above a dragon amongst pierced scrolling clouds, the body decorated with two dragons between pierced scrolling bands, above a slightly spreading foot, both pieces with suspension loops, 16.5cm, a Chinese silver pierced incense pot and cover, Qing, the cover with applied jade roundelbordered by a band of flowers, the pierced body with character marks between an embossed panel of a lizard upon a leaf, the base with shou symbols and dragons head, struck mark to the underside, 9.5cm; and a tall Indian silver plated beaker vase, 19cm **£150-250**



- 115 A Chinese coromandel style lacquer screen, 20th century, the four panels decorated with ducks amongst flowers and a willow tree, 182.5cm high, 162cm wide **£100-150**





## Fine & Important European Furniture, Fine Art & Antiques, Thu, 31 March 2022 9:30

- 116 A Chinese carved dark green jadeite figure of Guatama Buddha standing in the varada mudra (?) with a begging bowl in the other hand, within a mandorla on a double lotus socle with canted rectangular plinth base. 8 cm wide x 20 cm high **£200-300**



- 117 A pair of Chinese blue and white vases and covers, Qing, late 19th century, painted with the eight Taoist immortals above spuming waves, Baxian, the covers with Taoist auspicious items, apocryphal six character Kangxi marks, 42cm **£2,000-3,000**



- 118 A Chinese red and black lacquered folding double 'Travelling' chair, Qing Dynasty, early 19th century, with overhanging top rail with a pair of shaped back splats pierced with ruyi head detail above a woven rattan seat and individual footrests. Bearing Chinese inscription to the reverse of each splat. 110 cm overall length x 101 cm high x 43 cm deep **£300-500**



- 119 A Chinese moulded glass censer, modelled as a temple lion with scrolling mane, 7cm high **£150-250**



- 120 A Nepalese gilt-bronze Sukunda (ritual oil lamp) with applied naga mantle and a figure of Ganesh and Hanuman to the handle and seamed baluster body. 29 cm high **£200-300**

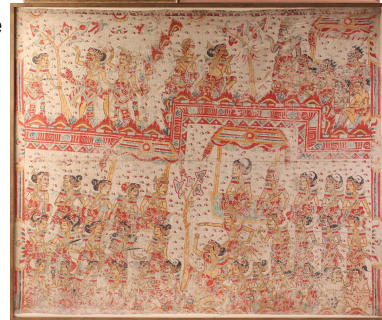


## Fine & Important European Furniture, Fine Art & Antiques, Thu, 31 March 2022 9:30

- 121 After Katsushika Hokusai (1760 - 1849), two Manga series woodblock prints, 18 x 12.5cm; a colour woodblock print of the four heavenly kings killing the earth spider, 22.5 x 31.5cm, and Kitagawa Utamaro, one of the 'Three Beauties of the Present Day', colour woodblock print, 38 x 25cm (Qty: 4) **£100-150**



- 122 A very large Kamasan Balinese painting probably depicting the battle from the Bharatayudha, executed in two joined sections, lacquer colours on linen, framed. 145.5 cm x 174 cm  
Private collection **£300-400**



- 123 An Eastern mottled green hardstone leaf-shaped anointing spoon with peacock head terminal with inset foiled red stone eye. 10 cm long x 4.2 cm wide, together with a small jadeite circular bowl with concentric line decoration. 6.5 cm diameter x 3 cm high. **£200-300**



- 124 A Chinese dark green/brown hardstone Bi disk pierced and carved in low relief with writhing dragons and zoomorphic creatures. 18 cm wide x 25 cm high **£100-150**



- 125 A Japanese patinated bronze heavy baluster jardiniere, Showa period, 20th century, with barbed rim above reserves of waterfowl in relief on an intricate moulded labyrinthine ground with dragon and scudding cloud decoration. 31 cm diameter x 24 cm high.  
Private collection **£80-120**



## Fine & Important European Furniture, Fine Art & Antiques, Thu, 31 March 2022 9:30

- 126 A Chinese carved pale green jadeite figure of a cicada, 6.5 cm long x 3.4 cm wide, together with an Eastern circular jade panel bearing Islamic calligraphy and one triangular jadeite panel with Islamic script. **£150-200**



- 127 A pair of Chinese pottery Sancai vase stands/garden seats, mid 20th century, the circular tops above an inverted baluster body, with pierced panels decorated with ducks amongst reeds, a horse and carp, a viewing rock between pine trees, and trees on a mountain path. 43.5cm high, diameter of the top 28cm **£300-500**



- 128 A group of three Eastern white metal gentleman's rings including one set with a large cabochon polished blue chalcedony (?) and one yellow metal ring of similar style. (Qty: 4) **£200-300**



- 129 A pair of Japanese porcelain blue and white chargers, late 19th century, painted with a bird upon a blossoming prunus branch, with rockwork, bamboo and a central tree, within a leaf blade border, 45.3cm (Qty: 2) **£100-150**



- 130 A Chinese blue & white vase and cover, Qing, Kangxi, the cover with pointed knob and painted with lotus flower scrolls within a prunus blossom and cracked ice border with barbed rim, the neck with ruyi head cloud collar, the body painted with prunus and cracked ice, 45cm **£1,200-1,500**





## Fine & Important European Furniture, Fine Art & Antiques, Thu, 31 March 2022 9:30

- 131 A Chinese porcelain dragon bowl, 20th century or later, the interior with An Hua decoration of a writhing dragon amongst clouds, the exterior with further An Hua dragons chasing a flaming pearl under a mottled blue ground, apocryphal six character Xuande mark, 20.8cm dia, 8.7cm high **£100-150**



- 132 A pair of composition temple lions, 20th century, traced of gilt and red paint, 25.5cm, each on a wood plinth; a Chinese red lacquered box, decorated with figures in a landscape, 33.5cm wide; a Japanese Kiseru with Tonkotsu; a Japanese Zushi, 10.5cm, three Chinese wood carvings of figures (tallest 31cm) and a lion with cubs, a collection of figures to include a sancai deity, a Minqi figure of a soldier, 22cm, a tall man holding a red peach, three black pottery terracotta warriors, a resin okimono of Japanese deities and vase stands **£80-120**



- 133 An Eastern black/green circular Bowenite bowl with flared rim 13 cm x 5 cm high **£250-300**



- 134 A Chinese ivory figure of a deity, possibly late Ming, dressed in long robes, 16.8cm; an ivory figure of Shou Loa, late Qing/early 20th century, wearing long robes and holding a tall staff, 17.5cm, each on a wood base, 18cm & 19.5cm **£300-400**



- 135 An Eastern carved hardstone plaque carved in low relief with Sadaksari-Lokesvara seated within a shaped outline. 19.5 cm wide x 29 cm high **£150-200**



## Fine & Important European Furniture, Fine Art & Antiques, Thu, 31 March 2022 9:30

- 136 A Chinese porcelain famille verte oval bowl, Qing, Kangxi period (1662 - 1722), the deep fluted sides with gilt rim, the interior painted with fish, crabs and lobsters amongst plants, the exterior with birds on blossoming prunus and peony, with bamboo, some gilt petals, 39.3cm dia, 9.5cm high  
A private Hertfordshire collector. **£800-1,200**



- 137 An Eastern pierced white metal polylobate form buckle with intricate Islamic script mounted on either side with a hinged link. 10.4 cm wide x 7 cm high. Together with an Eastern heavy white metal gentleman's ring mounted with a "Double Eye" banded agate together with one similar ring with a single stone agate **£100-150**



- 138 A Chinese gilt bronze Bodhisatta Avalokiteshvara, Qing, with coloured pigment jewels, seated on a double lotus throne, 17cm **£5,000-7,000**



- 139 A collection of Chinese carved glass snuff bottles and stoppers. Together with a larger internally painted glass snuff flask painted with a portrait study of Confucius. 5.5 cm wide x 9.5 cm high the largest. (Qty: 4) **£150-200**



- 140 A Chinese Famille Rose porcelain baluster chocolate pot and cover, Qianlong, the high dome cover with peach finial, the baluster body painted with two reserves of a Mandarin proffering a lotus flower to a courtier before a riverscape, the moulded handle with a single spur, with a short moulded spout, 15 cm wide x 22 cm high. **£300-500**



## Fine & Important European Furniture, Fine Art & Antiques, Thu, 31 March 2022 9:30

- 141 A large Tibetan style hardstone Bi disk with applied bronze boss embossed with zodiac symbols and a central reserve with the figure of Garuda. 41 cm diameter **£200-300**



- 142 A Chinese carved grey/green jadeite figure of a running stag with pierced antlers. 11 cm wide x 8.5 cm high. Together with an apple green jadeite pendant pierced and carved with gourds on a vine, and a grey and russett jadeite figure of a kneeling gentleman supporting a dragon on his shoulder. (Qty: 3) **£100-150**



- 143 A large rectangular Chinese carved glass snuff flask and stopper with internally painted with a scene of Chinese ladies in a garden landscape, together with an enamel snuff bottle, turned agate snuff bottle and three other snuff bottles. 8.5 cm wide x 11 cm high the primary item **£200-300**



- 144 A Kamasan Balinese painting depicting Bima in the underworld from the Bhima Swarga, lacquer colours on linen, framed. Together with another probably depicting Jatayu in the Ramayana story. The primary item is 117 cm x 144 cm **£150-200**



- 145 A Chinese porcelain Wu Shang Pu teapot, Qing, late 19th century, of hexagonal form, painted with Liang Gong and Wu Ze Tian (Wu Zhao) from the Table of Peerless Heroes, the cover with a peach form knob, with interior pierced liner, on six short feet, painted red seal mark for Daoguang, 13cm high; a Famille rose hexagonal teapot, late 19th century, painted with the three star gods and attendants, red stamped Tongzhi seal mark, 14.5cm, a Chinese gourd shape teapot, with applied blossoming vines in blue, yellow and green against a green ground with aubergine handle, 10cm high; and a Cadogan type teapot modelled as a Buddhist temple lion, standing on its haunches against a lidded vase, 16.5cm **£400-600**





## Fine & Important European Furniture, Fine Art & Antiques, Thu, 31 March 2022 9:30

- 146 A Chinese lacquered Mandarin fan, 19th century, with asymmetric sticks with gilt figural decoration, the leaf painted with noble figures, each with applied painted ivory face, the reverse with fanciful birds, butterflies and insects on blossoming floral sprigs, 55cm wide, 30cm long **£300-500**



- 147 A Chinese Famille rose plate, Qing, mid 18th century, painted with two females seated at a table with a bowl of finger citron, served by an attendant and boy, a dog eyeing a beetle to the foreground, within a gilt scroll border, the cavetto with en grisaille and gilt sprigs, 22.7cm dia **£200-300**



- 148 Two Chinese blue and white dished plates, Qing, early 19th century, probably from the Diana wreck, 26.7cm & 27.5cm dia (Qty: 2) **£150-250**



- 149 A Chinese patinated bronze head of the Buddha with contemplative downcast eyes and pendulous earlobes. 18 cm wide x 21 cm high **£200-300**



- 150 A Chinese crackle ware wrist rest, in duck egg blue, 20.3cm **£500-700**



## Fine & Important European Furniture, Fine Art & Antiques, Thu, 31 March 2022 9:30

- 151 A Chinese variegated green hardstone Bi disk. 30 cm diameter. **£200-300**



- 152 A Chinese ivory doctors model, Qing, 19th century, the recumbent naked figure resting with her eyes closed and her right hand on her abdomen, 11.8cm, on a carved wood stand; a carved wart hog tusk figure of a deity, 8.5cm; a Cau Mau wreck blue & white tea bowl and an early unglazed Sawankhalok straight sided bowl, 14th/15 century, the interior with raised ruyi head decoration and everted rim, 16cm diameter **£150-250**



- 153 An Eastern gilt-bronze Amitayus Buddha seated in the dhyana mudra holding the vase of abundance (kalasha) on a single lotus socle 20 cm wide x 13 cm deep x 28.5 cm high **£200-300**



- 154 A Chinese cinnabar lacquer melon shaped pot and cover, 20th century, decorated with vine leaves and tendrils against a zigzag ground, 12.5cm dia, 12cm high **£150-250**



- 155 A Japanese okimono of an elderly man, Meiji period, holding a bamboo staff and a lantern, with kizeru and tabako-ire attached to his waist, signed in a red tablet, 21cm, **£100-150**



## Fine & Important European Furniture, Fine Art & Antiques, Thu, 31 March 2022 9:30

- 156 A Chinese blue & white petal moulded bowl, Qing, Kangxi, finely painted throughout with sprigs of flowers on moulded sections, a lingzhi fungus to the underside within double concentric circles, applied label for Marchant, London, 15cm dia; together with two blue & white wine cups, one Kangxi and of octagonal form, the other painted with ruyi head fronds with six character Jiajing mark, **£250-350**



- 157 An Eastern heavy white metal gentleman's ring set with an oval agate panel engraved with Islamic script. 4 cm x 3 cm the panel. Together with heavy white metal ring with a circular green hardstone panel with an Arabic inscription. **£100-150**



- 158 A Chinese porcelain bitong, Qing, painted with a monochrome dragon writhing amongst thick clouds, within simulated wood borders, the interior with similar simulated wood grain decoration, apocryphal six character Qianlong seal mark within a green and black key border, 12.2cm dia, 10.2cm high **£1,200-1,500**



- 159 Two Chinese ivory figures of Guanyin, Qing, late 19th century, each carved with a downwards serene expression, holding a blossoming sprig, wearing long flowing robes and holding either her sash or a fan, 30.5cm & 31cm, on wood bases **£300-500**



- 160 A pair of Chinese hongmu and porcelain tables, probably Guangxu period, the top inset with a millefleur porcelain panel within a key border, supported upon square legs, 47cm wide, 49cm high, 34cm deep **£1,500-2,500**





## Fine & Important European Furniture, Fine Art & Antiques, Thu, 31 March 2022 9:30

- 161 An Eastern gilt-bronze figure of Fudo Myo-o seated in the lotus position with rope and sword in hand. 11.5 cm wide x 9.5 cm deep x 15 cm high **£150-200**



- 162 A pair of 20th century Japanese painted glass pictures, each 54 cm x 38 cm in wooden frames. **£200-300**



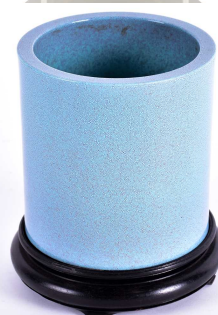
- 163 A Chinese Famille rose allegorical export plate, Qing, mid 18th century, depicting Earth painted after Francesco Albani (1578 - 1660), one of a series of the four elements, within a scrolling tendril border with black and gilt bands, 22.8cm dia **£200-300**



- 164 An Eastern moss green jadeite/bowenite circular carved dish in low relief with swirling "Islimi" and palmettes below a ruyi head border. 14.5 cm diameter 5.2 cm high. **£250-300**



- 165 A Chinese Robin's egg glaze Bitong, of cylindrical form, 13cm high, 12.7cm dia, on wood stand **£250-350**



## Fine & Important European Furniture, Fine Art & Antiques, Thu, 31 March 2022 9:30

- 166 A Chinese opium pipe, late Qing - early 20th century, the Yixing square bowl with painted character marks and landscapes to the sides, seated within carved wood fist on a wood shaft with brass mounts, the mouthpiece of stained amber?, 35cm **£100-150**



- 167 A Chinese green and white jade belt with shaped rectangular panels carved with figures in low relief and a shaped horse's head and loop buckle. 79 cm long x 5 cm wide **£150-200**



- 168 A group of Chinese vases, Qing and later, comprising a flambe Meiping, 19cm, a flambe garlic mouth vase, 22cm, a white ground Ge glaze Meiping, 20cm, a sang de boeuf vase, 21.5cm and a monochrome blue vase, 19.8cm **£400-600**



- 169 A Chinese lacquered mandarin fan, 19th century, the leaf painted with noble figures, each with applied painted ivory face, the reverse painted with a riverside trading post with figures and boats, the sticks painted in gilt with figures in a garden 49cm open, 26.5cm long **£200-300**



- 170 Chinese bronze spade and key money, Zhou - Xin dynasty, the later coins of the Wang Mang period 9 -23 AD, 5.3cm - 7.6cm From a private collection. **£150-250**



## Fine & Important European Furniture, Fine Art & Antiques, Thu, 31 March 2022 9:30

- 171 A pair of Chinese blue and white vases and covers, Qing, late 19th century, the covers painted with young boys, the neck with bamboo leaves, the vases painted with an interior scene of a noble couple seated whilst entertained by musicians and attendants bringing food, above a band of auspicious flowers, 33cm **£2,500-3,500**



- 172 A Chinese rectangular heavy gilt metal ingot bearing three panels of characters relating to Chang'an House (?) 176.4 grams, 5.3 cm x 4.4 cm x 8 mm thickness Together with a small cast and gilt-bronze figure of the Buddha seated in the Bhumisparsa upon a double lotus socle. 6 cm wide x 7 cm high **£100-150**



- 173 A Chinese Yixing teapot, 20th century, of square form with re-entrant corners, with temple lion finial with inset eyes, the handle and spout with lion mask terminals, incised character marks to one side, the opposing side incised with a landscape, four character mark to the underside, 18cm wide, 10.5cm high, **£100-150**



- 174 Yoshi Komno (Japanese, 20/21st century), a Bijin in traditional dress with falling plum blossom petals, signed, watercolour on silk, 23 x 26cm  
Typed label verso reads 'Presented by Japan Afghan hound Association, March 1981'. **£150-250**



- 175 A Chinese bronze mirror, possibly Han dynasty, of circular form, cast with a pierced central boss framed by four character marks and mythical beasts within ribbed and scrolling borders, on a later carved wood stand, 10.3 diameter, 18.7cm overall  
From the private collection of a deceased estate. **£150-250**



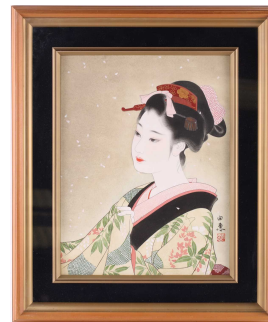


## Fine & Important European Furniture, Fine Art & Antiques, Thu, 31 March 2022 9:30

- 176 A small collection of three Eastern white metal and hardstone pendants each with Islamic script. together with an oval yellow metal mounted pendant with oval, script panel. 5.3 cm wide x 5.3 cm high the larger of the four. (Qty: 4) **£200-300**



- 177 Yoshi Komno (Japanese, 20/21st century), a Bijin in traditional dress with falling plum blossom, signed, watercolor and gouache, 40 x 30.5cm  
Typed label verso reads ' Presented by Japan Afghanistan Association, March 1981'. **£250-350**



- 178 A Chinese peach bloom chrysanthemum dish, Yongzheng mark, possibly of the period, with shallow raised sides, six character Yongzheng mark within two blue circles, 16.2cm dia **£2,500-3,000**



- 179 A Chinese ivory vase stand, Qing, 19th century, a stylised eternal knot to the centre with pierced borders, on four chilong type feet, 9cm dia, 3cm high **£300-400**



- 180 A Chinese porcelain vase, late Qing, painted with Lu Dongbin standing by a tree holding a string of rosary beads and a fly whisk, six character Daoguang mark, 15.5cm **£300-400**



## Fine & Important European Furniture, Fine Art & Antiques, Thu, 31 March 2022 9:30

- 181 A Japanese black lacquer five-drawer tansu (travelling chest)  
Meiji period early 20th century. With extending iron handles  
and brass lock furniture  
Private collection **£200-300**



- 182 Five Japanese woodblock prints, to include Soga Goro making  
Puns, Goro dressed as a warrior surrounded by text containing  
puns, 33 x 15.5cm; after Hiroshige Ando ' Night rain at Azuma  
Shrine', 16 x 22cm; Hokusai - 'Cuckoo and Azaleas', 25.5 x  
18.5cm, and two others, images 21 x 14.5cm (Qty: 5) **£100-  
150**



- 183 An extensive Chinese export porcelain dinner service, Qing,  
late 18th/early 19th century, each painted with a watery  
landscape with a fisherman in a boat before buildings,  
mountains and trees, within diaper and pendant borders and  
barbed rims, consisting of two large meat plates, 47cm dia, two  
oval dishes, 39cm dia, two lidded tureens, 27.3cm dia, a large  
tureen and cover, 30.5cm (excluding handles), thirty eight  
plates, 24cm dia, sixteen soup dishes, 24.4cm dia, a deep  
sided square bowl, 23.7cm dia, a small tureen, 14.7cm dia  
(excluding handles) and five graduated oval plates 19.5cm -  
35cm dia  
This has remained with the same family since the early 1800's,  
the vendor's great, great grandfather was stationed in India  
and received this service as a wedding present, thence by  
descent. **£800-1,200**



- 184 A Chinese ivory figure of Shoulao feeding a Sika deer, Qing,  
19th century, well carved throughout, with a smiling face and  
long robes, 24.5cm **£300-400**



- 185 A Chinese blue and white porcelain circular saucer dish with  
gilt and iron-red "Wufu" decoration amidst underglaze blue  
stylized clouds, the underside of the rim with a further four  
cobalt blue bats. Bearing an apocryphal six character mark for  
Guangxu to the base. 28.5 cm diameter. x 5 cm high **£100-150**



## Fine & Important European Furniture, Fine Art & Antiques, Thu, 31 March 2022 9:30

- 186 A pair of Chinese allegorical plates, Qianlong, 18th century, painted in puce enamel with a nude lady and two attendants, before a tree and classical temple, with du Pacquier style borders, with gilt rims, 22.8cm **£300-400**



- 187 A Eastern enamel circular bowl decorated on a yellow ground and reserves of colourful exotic birds and shou symbols, marked with apocryphal marks to the base. 17 cm diameter 8cm high Together with one of similar form decorated with Immortals **£200-300**



- 188 A Chinese telescopic lacquered Mandarin fan, Canton, mid 19th century, both sides of the leaf painted with noble figures with attendants, each with applied painted ivory heads, the lacquered guards each painted in gilt with a figure of a boy, 41cm wide, 27.5cm long extended, 22cm long when closed **£200-300**



- 189 A Chinese porcelain Wu Shuang Pu bitong, late Qing, painted with figures from the table of forty Peerless heroes, and lines of calligraphy, painted four character Daoguang mark, 15cm high, 13cm dia **£300-500**



- 190 A Chinese blue and white jardiniere, Qing, late 19th century, painted with prunus on a blue ground, below a key band, a band of diaper and foliate vignettes, the base with a band of spuming waves, 45.5cm dia, 39.5cm high **£500-700**





## Fine & Important European Furniture, Fine Art & Antiques, Thu, 31 March 2022 9:30

- 191 A pair of Chinese porcelain fish bowls, late Qing/early 20th century, the interior painted with golden koi carp amongst plants, the exterior with famille verte panels of dignitaries and attendants within a mountainous landscape, and a peacock and peahen on a gnarled branch with blossoming prunus and tree peony, with smaller panels of a shi shi and a songbird, 47cm dia, 40cm high, each on a Chinese blackwood stand with carved prunus decoration and an inset marble top, 49cm high, 88.5cm high overall **£800-1,200**



- 192 A Chinese white metal cheroot holder in the form of a dragon with impressed marks to the underside. 10.5 cm long Together with a pierced archaic zoomorphic white metal panel bearing a two-character mark "SilverFeet" (?) 10 cm x 4.5 cm **£80-120**



- 193 A Chinese carved ivory parasol handle, early 20th century, the terminal carved as a dragons head, the tapering stem carved with dragons, pearls, birds, butterflies amongst clouds, 35cm, together with a Japanese carved marine ivory figure of a man with two boys, Meiji period, the man holding a kite with one boy on his shoulder, the other standing holding a drum, incised red tablet, 18.5cm **£70-100**



- 194 A n Indian gilt-bronze figure of Milarepa (?) seated in Lila asana upon an animal pelt on a single lotus socle. 15 cm long x 10 cm deep x 23.5 cm high **£200-300**



- 195 A Chinese porcelain tea bowl, Qing, 18th century, painted with a landscape, the body almost eggshell, 6.7cm dia, 3cm high **£200-300**



## Fine & Important European Furniture, Fine Art & Antiques, Thu, 31 March 2022 9:30

- 196 An Indo Persian style rectangular brass and steel box overlaid with intricately fretted Islamic calligraphy. 15.5 cm wide x 11.5 cm deep x 9.4 cm high **£100-150**



- 197 An Eastern coin scale in a fitted teak case carved with Islamic script, with two beams and pans in sizes and corresponding iron weights 22 cm long x 13 cm wide x 4.5 cm deep **£100-150**



- 198 A large Eastern oval agate seal with a central panel carved in low relief with the Islamic script within the confines of an Arabic character. 6.5 cm long x 4.6 cm wide. Together with a square moss agate seal, a white metal mounted red stone circular seal, now as a pendant and a smaller oval seal all bearing Islamic calligraphy. **£300-400**



- 199 A Mughal style carved grey mottled jadeite Khanjar handle of pistol grip form overlaid in gilt wire and foiled red stones. 13.5 cm long x 8 cm deep x 3.7 cm thickness **£200-300**



- 200 A Mughal style carved green jadeite Khanjar handle in the form of a horse's head. 15 cm long x 11 cm. **£200-300**



## Fine & Important European Furniture, Fine Art & Antiques, Thu, 31 March 2022 9:30

- 201 An Indian/ Persian miniature watercolour of a female musician in a leafy garden setting. 22 cm x 15 cm, together with an Indian/ Persian miniature watercolour of a Prince resting in an ornate garden. within a marbled card border 20.5 x 17 cm (Qty: 2) **£200-300**



- 202 A Multani architectural pottery frieze tile with relief designs and painted calligraphic Islamic script, together with one similar. 38 cm x 23 cm the largest **£200-300**



- 203 A Multani pottery copper blue glazed ridge tile of lotus frond form together with a Multani architectural pottery pilaster section decorated with zigzag bands of flowers and palmettes. 28 cm x 11 cm the ridge tile. **£200-300**



- 204 An Indian Mughal brass ewer (Aftaba), 18th century or later, with hinged domed finial with pointed knop, the pear shaped body with relief cast leaves, with straight hexagonal spout and scroll handle, decorated throughout with leaves, one side with incised calligraphy, on four short legs, 26.5cm **£100-200**



- 205 A Persian, late Qajar watercolour portrait of Ahmad Shah Qajar, Shah of Persia 1909-1925, within a border of gilt Arabesques and Royal Arms of Persia 29.4 cm x 22 cm, together with a Persian watercolour probably depicting Layla & Majnun. 26 cm x 14.5 cm (Qty: 2) **£200-300**





## Fine & Important European Furniture, Fine Art & Antiques, Thu, 31 March 2022 9:30

- 206 An Indo-Persian style brass celestial globe with engraved Islamic annotation and axial mountings, inset with positions of the constellations in white metal 17 cm diameter. **£100-150**



- 207 An Eastern brass "Shisha" water pipe base with studded and applied diamond boss decoration to the baluster body above a spreading disk foot. 36.5 cm high. **£100-150**



- 208 An Eastern Kard and scabbard, The ivory handle mounted with a niello worked ricasso, pommel and fore-end and well-marked wootz steel single-edged blade. With a simple gilt brocaded fabric-covered scabbard. 34 cm long overall. Together with An Eastern damascene worked Kard and conforming wootz steel case with hinged cover. 35.5 cm **£150-200**



- 209 An Indian carved rock crystal oblong dish with perched falcon handle and lotus base. 13.5 cm long x 7.5 cm wide x 3.2 cm high. **£150-200**



- 210 An Indo Persian style white metal pendant necklace with engraved and pierced decoration set with a red agate panel bearing engraved Islamic script suspended by a string of garnet style beads with philosophers knot fob. 53 cm long in total the pendant is 6 cm x 6 cm. **£150-200**



## Fine & Important European Furniture, Fine Art & Antiques, Thu, 31 March 2022 9:30

- 211 A Mughal style carved pale green jadeite Khanjar handle of stylized lotus form with overlaid bands and beads of foiled pink stones 13.5 cm long x 5.5 cm wide x 2.6 cm thickness. **£200-300**



- 212 An Indo-Persian style steel box with moulded, hinged caddy top bearing intricate engraved Islamic calligraphy throughout on shaped supports 14.5 cm wide x 14.5 cm long x 16 cm high **£100-200**



- 213 An early Islamic glazed terracotta frieze section, possibly 11th century, deeply carved with Kufic script showing signs of oxidation. 27 cm x 14 cm x 2.5 cm thickness **£400-500**



- 214 Persian miniature watercolour sketch of a seated Prince in a flowering garden with a gurglet and basin at his knees, within a calligraphy and lacquered border 16.5 cm x 11.5 cm . Together with another Persian miniature watercolour of a Jay perched upon a rustic shrub within a marbled card border 16.5 cm x 10 cm (Qty: 2) **£200-300**



- 215 An Indian carved and pierced lancet arched pottery window panel of cellular design with a central star motif. 55 cm x 36 cm x 3 cm thickness **£200-300**



## Fine & Important European Furniture, Fine Art & Antiques, Thu, 31 March 2022 9:30

- 216 A Botchio fetish group, Fon, Benin, with three carved busts, to with glass bead necklaces, bound in earth and material on an integral boat shape base, 16cm wide; a pair of articulated male and female dolls, Timor, Indonesia, each with cloth wrap and united by bound cord, tallest 34cm; and a Luba reliquary figure, 16cm **£200-300**



- 217 Two Igbo carved wood masks, Nigeria, the larger mask carved from a single trunk, with birds, face masks and stylised crocodiles above a face mask with carved scarifications, with traces of red & white pigment, 75cm; the smaller mask with an anthropomorphic figure between two horns, the mask with scarifications and painted in a grey pigment, 59.5cm; a Babanki elephant mask, Cameroon, 81cm; a Senufo carved ancestor bowl and cover, 70cm; a small pot and cover on four legs, with relief carved face masks, 41cm; a carved crocodile wall plaque and a musical instrument **£200-300**



- 218 A Louis XV style carved and painted Duchess Brisee, late 19th century. With decorative ivory damask upholstery. On cabriole supports. 82 cm wide x 189 cm long 85 cm overall height, 40 cm height to the seat. **£400-600**



- 219 A Charles II-style mirror with figural faux stumpwork cushion frame, c1920s. With lacca cresting with a bold scallop shell crest. 50 cm wide x 85 cm high **£250-350**



- 220 A fine carved mahogany and gilt gesso Bergere, probably English, George III but in the French taste, with horseshoe back and paper scroll moulded detail terminating in well-carved acanthus scroll arms above a serpentine seat. Supported by stop fluted turned legs fore and aft. 64 cm wide x 65 cm deep x 90 cm overall height, 45 cm height to seat. Private collection **£200-300**





## Fine & Important European Furniture, Fine Art & Antiques, Thu, 31 March 2022 9:30

- 221 A pair of early 19th century Anglo- Indian (Rajasthan) mother of pearl inlaid and ebony veneered side chairs, with bowed cresting rail with rams head terminals above a leopard skin covered drop-in seat and supported on sabre legs fore and aft. 62 cm overall width x 52 cm overall depth x 90 cm overall height, 55 cm height of seat. (Qty: 2)  
Private collection **£100-150**



- 222 A Louis XV style parquetry cube inlaid walnut and rosewood bombe commode, 20th century, with moulded serpentine terrazzo marble top above a pair of long and deep shaped drawers with florid gilt metal fittings throughout, on shaped cabriole supports. 120 cm wide x 56 cm deep x 85.5 cm overall height. **£250-350**



- 223 A George III style hide upholstered two-seater 'camelback' settee and a pair of matching armchairs, 20th century, the muted green leather upholstery with close nailed and deep buttoned detail, supported by moulded mahogany supports united by cross stretchers, and a similarly upholstered lyre-shaped stool. 140 cm wide x 79 cm high 70 cm deep, 44 cm height to the seat (Dimensions: p) (Qty: 4)  
Private collection **£800-1,200**



- 224 An early 20th- century Gustav Becker quarter "Westminster" chiming mantle clock with a mahogany broken arch case. the silvered dial with strike/silent and incremental advance and retard dials. Together with an Art Nouveau mahogany effect balloon-type mantle timepiece inlaid with curvilinear decoration. 21 cm wide x 29 cm high x 16.5 cm deep **£100-150**



- 225 A Louis XIV style carved wood and gilt gesso rectangular boudoir stool with stuff over upholstered to and well-shaped cabriole legs united by a shaped cross stretcher. Together with a small carved wood and gilt gesso Louis XVI style oval footstool. 47 cm long x 38 cm wide x 49 overall height (the primary item) (Qty: 2)  
Private collection **£150-250**



## Fine & Important European Furniture, Fine Art & Antiques, Thu, 31 March 2022 9:30

- 226 A George III mahogany gentleman's valet stand with shield-shaped mirror above a circular dished middle tier on a decorative carved tripod base. 178 cm high x 48 cm diameter  
Private collection **£100-200**



- 227 An early 17th-century style oak credence table with demilune fold-over top and spindle supports united by a cross stretcher, probably constructed from period and later architectural elements. 83 cm wide x approx 43 cm deep x 70 cm overall height.  
Private collection **£150-200**



- 228 A Louis XV style marble-topped commode vantaux, 20th century, fitted a pair of central deep drawers flanked by cupboard doors with gilt metal mounts throughout. supported on similarly embellished cabriole legs. 128 cm wide x 56 cm deep x 87 cm high **£500-700**



- 229 An Anglo-Indian teakwood and split cane plantation chair, 19th/20th century. With swivelling leg rests. Supported on turned legs. Together with a similar but later planters chair. The primary chair: 106 cm long (closed) x 63 cm wide 86 cm high, 40 cm high to the seat. (Qty: 2)  
Private collection **£300-500**



- 230 A George III mahogany Gainsborough type mahogany library open armchair, with squared supports united by a cross stretcher. 68 cm wide x 69 cm deep x 100 cm overall height. 45 cm height of the seat. Together with similar George III mahogany Gainsborough armchair (slightly smaller)  
Private collection **£400-600**



## Fine & Important European Furniture, Fine Art & Antiques, Thu, 31 March 2022 9:30

- 231 A Louis XV style parquetry cube inlaid walnut and rosewood bombe commode, 19th /20th century. With moulded serpentine terrazzo marble top above a pair of long and deep shaped drawers with florid gilt metal fittings throughout. On shaped cabriole supports. 103 cm long x 51 cm deep x 87 cm overall height. **£400-600**



- 232 An early 19th-century mahogany circular dish topped tripod wine table with inverted sabre supports. 58 cm diameter x 71 cm high overall, together with two other non matching mahogany pillar tables one with a piecrust edge and one dish top. (Qty: 3)  
Private collection **£150-200**



- 233 A George I/II style walnut lady's kneehole writing desk with cross and herringbone banded top above a single frieze drawer and a central cupboard door flanked by six short drawers all with brass swing handles. Supported by shaped bracket feet. 92 cm long x 51 cm deep x 76 cm overall height, **£200-300**



- 234 An early 20th century Globe Wernicke style stacking bookcase, four tiers with glazed doors, 162 cm x 87 cm x 34 cm. **£100-200**



- 235 An early 19th century North Midlands oak mule chest with a planked top, fan marquetry inlaid panels above two short and one long frieze drawer. Supported on shaped bracket feet. 126 cm long x 57 cm deep x 107 cm overall height **£150-250**





## Fine & Important European Furniture, Fine Art & Antiques, Thu, 31 March 2022 9:30

- 236 A George III Heppelwhite style satinwood crossbanded mahogany Gentleman's dressing table, the two flap top opening to reveal powder compartments and a rise and fall and ratcheting mirror, above two further doors concealing a bank of short drawers and single long drawer with a two-door night cupboard below. Supported by a pair of splay bracket feet united by a shaped apron. 74 cm wide (closed) x 61 cm deep x 91.5 cm overall height **£300-400**



- 237 A George III circular mahogany snap top wine table with birdcage movement, a half fluted and carved column over acanthus capped claw and ball cabriole supports. 72 cm diameter x 70 cm overall height  
Private collection **£150-200**



- 238 A French Empire marble-topped figured rosewood mirror backed side table, the first quarter of the 19th century, with gilt metal mounts throughout, supported by four plain Doric columns over an inverted breakfront sub base. 165.5 cm wide x 42.5 deep x 96.5 cm high  
Private collection **£400-600**



- 239 A pair of mahogany framed wingback armchairs, with modern deep red upholstery on front cabriole legs, 111 cm high x 79 cm wide, the seat 54 cm from the floor. **£200-300**



- 240 An Edwardian inlaid mahogany library writing table with an inset leather top fitted three frieze drawers to one side. Supported on square tapering legs. 153 cm long x 84 cm wide x 78 cm high, 63 cm knee height  
Private collection **£100-200**



## Fine & Important European Furniture, Fine Art & Antiques, Thu, 31 March 2022 9:30

- 241 A small Louis XV style marble-topped rosewood and floral marquetry bombe commode, 19th century. With two long shaped drawers and fitted with gilt metal mounts throughout. On slender cabriole supports. 72 cm wide x 38 cm deep x 73 cm overall height.  
Private collection **£200-300**



- 242 A good quality French Louis XV style Kingwood rectangular topped urn table, 19th/20th century. With quarter veneered tray top, above a candle slide and single side drawer with tulipwood capped quarter cut oak linings. On slender cabriole supports united by an under tier and terminating in applied ormolu-mounted feet. 43 cm wide x 29 cm deep x 68 cm overall height.  
Private collection **£200-300**



- 243 A late 19th century probably American, mahogany bowfront chest of three long drawers with carved leaf and fruit handles. 108 cm long x 54 cm deep x 90 cm high. Together with a similar but smaller three drawer chest of drawers. **£150-200**



- 244 In the manner of Coxed & Woster, an early 18th-century burr walnut cabinet on chest c1700, with a pair of decorative veneered doors enclosing an interior fitted with ten small drawers with gilt disc and ring handles. The lower carcass with two short over three long drawers, with engraved cabinet fittings and inlaid throughout with running bands of stylized foliage in ebony and holly. Supported on high, turned bun feet. 111 cm wide x 54 cm deep x 177 cm overall height **£3,000-5,000**



- 245 A Charles II oak chest of four long drawers late 17th century with raised moulded fronts veneered in contrasting "Snakewood" detail and teardrop handles on stile supports. 96 cm wide x 55 cm deep x 92 cm high **£300-500**



## Fine & Important European Furniture, Fine Art & Antiques, Thu, 31 March 2022 9:30

- 246 A mahogany Chippendale Ladderback child's an open armchair with a drop-in seat, together with a rustic four-legged stool. 46 cm wide x 66 cm high overall. (Qty: 2) **£100-150**



- 247 In the manner of Poul Cadovius, a suite of teak wall mounted furniture and shelves, to include drawers and cupboards, the wall mounts 203 cm. **£200-300**



- 248 A Chinese black lacquered rectangular altar table, 20th century. With moulded openwork frieze on squared supports terminating in barbed feet. 153 cm long x 51 cm deep x 82 cm high overall. Private collection **£200-300**



- 249 An Italian painted wood dressing table mirror, with scroll frame and easel stand, 44 cm high, together with a pair of similar table lamps, 34.5 cm high. (Qty: 3) **£100-150**



- 250 A set of three Dyrlynd Smith of Denmark "Mid-Century Vintage" teak breakfast bar stools with circular black vinyl seats and suspended tubular chrome footrests above a simple cross frame base. 35 cm diameter of top x 80 cm height of top Private collection  
Dyrlynd continue to this day to produce "Design Lead" high-quality furniture **£150-200**





## Fine & Important European Furniture, Fine Art & Antiques, Thu, 31 March 2022 9:30

- 251 An Italian painted and parcel-gilt single door Catholic Tabernacle, possibly Venetian 17th /18th century The arched architectural form decorated with baroque scrolls and the door carved with a monstrance in low relief. 57 cm wide x 29 cm deep x 63 cm high **£300-500**



- 252 A William & Mary style walnut rectangular hearth stool, early 20th century, with stuff over top and on shaped inverted trumpet supports united by a shaped stretcher on periwig feet. 94 cm long x 50 cm deep x 48 cm Private collection **£250-350**



- 253 Two similar two-tiered etageres with rectangular laque burgauté panels decorated with oriental scenes both with smile gilt tubular brass supports. 50 cm long x 35 cm wide x 59 cm overall height The larger of the two. laque burgauté laque burgauté **£300-500**



- 254 A vintage possibly Danish bronze coloured hide sofa with a patchworked surface with two loose angular bolster cushions piped in contrasting tan leather at the angles and two corresponding scatter cushions. On simple beam bearer supports. 192 cm wide x 85 cm approx depth x 74 cm high, 44 height of the seat. Private collection **£100-200**



- 255 A George I style rectangular hearth stool, 20th century with stuff over upholstery and cross-grain apron. On harebell and shell carved cabriole supports. Together with a George II style mahogany dressing stool with cabriole legs and claw and ball feet. 66 cm long x 37 cm wide x 46 cm high (the primary item) Private collection **£150-200**



## Fine & Important European Furniture, Fine Art & Antiques, Thu, 31 March 2022 9:30

- 256 A George III mahogany circular snap top wine table, with birdcage movement and "gun barrel" column over three bold cabriole legs with shaped pad feet. 72 cm diameter x 71 cm overall height  
Private collection **£100-150**



- 257 A George I figured walnut caddy topped bachelor's chest of four long drawers. With quartered top and brushing slide below. On shaped bracket feet. 86.5 cm wide x 52.5 cm deep x 82 cm high.  
Private collection **£300-500**



- 258 A Victorian mahogany two-door library bookcase, the doors with arched glazed panels decorated with carved capitals and adjustable shelves within. The base with a pair of figured panel doors with applied corresponding decorative beading on a simple plinth base. 143 cm wide x 38 cm deep x 244 cm high  
Private collection **£300-500**



- 259 Robert Heritage for Archie Shine, a 'Heritage' rosewood dining suite, circa 1960's, comprising extending dining table, eight dining chairs (2 + 6) and a sideboard, the sideboard with copper inset panels with feather motif, the table fully extended 242cm long, 181cm long without additional leaves, 72.5cm high, 89cm deep, ( each leaf 30.5cm x 89cm), the sideboard 230 cm long, 78.5 cm high, 50.5 cm deep  
CITES Article 10 (non-transferable) licences no. 612762/01 & 612762/02 **£800-1,200**



- 260 A Chinese black lacquered rectangular altar table, 20th century. With openwork frieze on square supports. 152 cm long x 51 cm deep x 69 cm overall height **£150-200**



## Fine & Important European Furniture, Fine Art & Antiques, Thu, 31 March 2022 9:30

- 261 A George III/IV "D" shaped rosewood crossbanded satinwood fold-over card table, with entablature frieze over spindle columns and inverted sabre supports with brass lions paw casters. 88 cm long x 44 cm deep x 76 cm high. Together with a good George III mahogany urn splat side chair and a 19th-century mahogany oval folding butler's tray on later coffee table base.  
Private collection **£150-200**



- 262 A George II style torchere with moulded octagonal top over skeletonised column support on a, three scroll feet. 107cm high Together with a George III mahogany bedpost torchere  
Private collection **£100-150**



- 263 A George III brass-bound mahogany octagonal cellarette with a hinged cover and a pair of brass folding handles on a square legged base with brass offset cup casters, together with a mahogany octagonal wine cooler, with lions mask handles, 48 cm wide x 69 cm high the cellarette (Qty: 2)  
Private collection **£200-300**



- 264 A Napoleon III ebonized decanter box, late 19th century. With lift up lid inset with brass inlay and decorative tortoiseshell panel opening to reveal a fitted removable interior. 36 cm wide x 27 cm deep x 25 cm high. Together with a spelter figure and a pair of rectangular gilt framed wall mirrors. 77 cm x 51 cm (Qty: 4) **£100-150**



- 265 A pair of French Louis XVI style white painted shield back fauteuils, 20th century. With carved, channelled frame with serpentine seat rail on turned fore supports. 101 cm high x 69 cm wide x 63 cm deep ,50 cm height of seat. **£150-200**





## Fine & Important European Furniture, Fine Art & Antiques, Thu, 31 March 2022 9:30

- 266 A George III mahogany piecrust topped wine table with half fluted and carved column over well-carved cabriole legs terminating in claw and ball feet. 55 cm diameter x 65 cm overall height  
Private collection **£300-500**



- 267 A small Louis XV style marble-topped rosewood and floral marquetry bombe commode, 19th/20th century. With two long shaped drawers and fitted with gilt metal mounts throughout. On slender cabriole supports. 72 cm wide x 37 cm deep x 82 cm overall height.  
Private collection **£200-300**



- 268 A George III mahogany provincial commode chest of three long drawers, with swan neck handles and supported by shaped bracket feet. 90 cm wide x 48 cm deep x 84 cm overall height.  
Private collection **£150-200**



- 269 A George II walnut caddy topped lady's kneehole desk, with crossbanded and quarter veneered top above one long frieze drawer and a central arched cupboard door flanked by six further short drawers, supported on four shaped bracket feet. 81.5 cm wide x 46 cm deep x 82 cm overall height **£600-800**



- 270 An Edwardian inlaid mahogany seven-piece salon suite, comprising a bow backed two-seater settee a pair of matching tub chairs and four high backed loo chairs. All with satinwood strung detail. Supported on square tapering legs terminating in swivel casters. 126 cm wide the settee  
Private collection **£300-400**



## Fine & Important European Furniture, Fine Art & Antiques, Thu, 31 March 2022 9:30

- 271 A middle to late 17th century two-panel oak coffer with moulded detail, the frieze rail with lunette decoration, on simple stile end supports. 92 cm wide x 52 cm deep x 61 cm overall height.  
Private collection **£100-150**



- 272 A Heppelwhite style mahogany four-poster bed, 19th century and later, the end posted with cluster column and crisp plantain leaf carving. Complete with Damask upholstered headboard, canopy, drapes and sprung bed base. 233 cm overall height x 168 cm overall width x 200 cm overall length. Size of bed base 151 cm x 200 cm  
Private collection **£300-500**



- 273 A pair of Victorian marble topped mahogany console cupboards, the white marble tops over single flame mahogany cupboard doors with column sides and supported on platform bases. 64 cm wide, 66 cm deep, 80 cm high. **£200-300**



- 274 An Edwardian giltwood two-seat open arm settee, with carved cresting, turned spindle back and crook arms. Supported on turned forelegs. Together with a Louis XV style giltwood banquet seat with scroll arms and cabriole legs. and three carved wood and gilt gesso flowering vine appliques The settee: 102 cm overall width x 86 cm overall height x 2 cm deep, 43 cm high to the seat (Qty: 3)  
Private collection **£150-200**



- 275 A Victorian mahogany chest on chest, with two short over seven long drawers, on bracket feet, 176 cm x 111 cm x 55 cm. **£200-300**



## Fine & Important European Furniture, Fine Art & Antiques, Thu, 31 March 2022 9:30

- 276 A "Hollywood Regency" gilt metal wheatsheaf ten light hanging electrolier. 80 cm diameter x 81 cm overall height  
Private collection **£200-300**



- 277 Of Royal interest: a 19th century mahogany wall-hanging bookcase, bearing a stamp verso reading '1866 Windsor Castle Room 138', with the VR stamp, 67 cm high x 111 cm x 19 cm. **£200-300**



- 278 A pair of George III style mahogany torcheres, 20th century, with turned and fluted columns, upon tripartite bases, 90cm high (Qty: 2)  
Private collection **£200-300**



- 279 A pair of French Louis XV style carved wood and gilt gesso single beds, late 19th century. Each with scroll ends and quilted damask upholstery, 111cm overall width x 113 cm overall height x 233 cm overall length. (Bed base size 108 cm wide x 200 cm long)  
Private collection **£200-300**



- 280 A Victorian golden oak rectangular gothic revival centre table with crenellated frieze and baluster profile end supports united by a serpentine cross stretcher secured with through tenon construction. Supported on moulded sledge feet. 129 cm long x 68 cm wide x 79 cm high  
An established private collection **£300-500**





## Fine & Important European Furniture, Fine Art & Antiques, Thu, 31 March 2022 9:30

- 281 A close pair of George II style hipped wingback armchairs, 20th century with close nailed and deep buttoned muted green hide upholstery, on channelled mahogany underframes. 81 cm wide x 115 cm overall height x 70 cm deep, 50 cm high to the seat (the very slightly larger due to their hand made nature)  
**£300-500**



- 282 A Louis XV style carved wood and gilt gesso chaise longue with arched cresting with floral mantle above swept and moulded arms and ivory Damask stuff over upholstery. Supported by shaped squat cabriole supports. 76 cm wide x 181 cm overall length x 91 cm high, 55 cm height to the seat.  
Private collection **£250-350**



- 283 A George II walnut pedestal wine cooler of canted form and fitted two short drawers. On moulded and shaped ogee bracket feet.  
Private collection **£200-300**



- 284 A George IV mahogany "Canterbury" with concave top rails and pierced silhouette dividers. Fitted a single frieze drawer supported on turned legs with brass castors. 48 cm wide x 37.5 cm deep x 46 cm high.  
Private collection **£150-250**



- 285 A Regency brass inlaid rosewood two flap sofa table, early 19th century. with two mock and two actual frieze drawers. On four-pillar supports above a concave sub base with inverted sabre legs terminating in lotus capped brass castors. 145 cm (open) long x 70 cm deep x 72 cm overall height  
Private collection **£300-500**



## Fine & Important European Furniture, Fine Art & Antiques, Thu, 31 March 2022 9:30

- 286 A pair of George III style marble-topped mahogany pedestal night cupboards, 20th century, each with a single frieze drawer and cupboard below, on splayed shaped plinth supports 41cm wide x 41 cm deep x 81 cm high One cupboard is fractionally higher than its counterpart. (Qty: 2)  
Private collection **£300-500**



- 287 A large oval carved wood and gilt gesso rococo wall mirror, 19th century by Thomas Ponsonby of 32 Regents Circus, London. With feathery scroll crestring and wheatears and leaf decoration. 120 cm overall width x 157 cm overall height.  
Private collection  
Thomas Ponsonby was a carver and gilder active in the early 19th century, his last will and testament is recorded in the archives of Kew records office, dated 18 February 1848 **£300-500**



- 288 A Louis XV style rosewood and marquetry bureau plat, in the manner of Edwards and Roberts, English late 19th century, with inset leathered and shaped top decorated with bands of flowering vines above a long frieze drawer and two flanking drawers with gilt metal mounts throughout. Supported by well-drawn cabriole supports. 133 cm wide x 71 cm deep x 77 cm overall height, 57 cm knee height.  
Private collection **£250-350**



- 289 A French Louis XV style walnut Bergere, 19th century, with arched back and "parchment scroll" arms on channelled cabriole legs, 68 cm wide x 65 cm deep x 86 cm overall height, 40 cm height of the seat, together with another similar Bergere.  
Private collection **£200-300**



- 290 A French Napoleon III gallery topped Rosewood and 'tumbling cube' parquetry three-tier etagere, the second half of the 19th century. With cartouch shaped tiers supported by serpentine supports with gilt metal mounts  
Private collection **£200-300**



## Fine & Important European Furniture, Fine Art & Antiques, Thu, 31 March 2022 9:30

- 291 A French Empire style eagle head carved and marble-topped circular centre table, probably by Roberto Giovannini from the "Armonie" With parcel-gilt detail on carved eagle claw supports. 73 cm diameter x 73 cm high  
Property of a gentleman **£150-200**



- 292 **A fine French Restoration mahogany and parcel-gilt jardiniere, early 19th century**, with circular woven gilt wire basket work top above a frieze of well-carved harebell and anthemion Supported on three bold lion's mask monopodia above a flame grain veneered concave trilateral podium base. 94 cm high x 59 cm wide approximately.  
Lot 2, Sotheby's Ariane Dandois sale, New York, 25 October 2007.  
Formerly of the Gucci collection, Milan, Tajan, Paris December 12th, 1995 **£4,000-6,000**



- 293 **A Gustav IV porphyry, giltwood and green-painted console table and mirror Sweden, circa 1810**, with carved and applied attendant sphinx the mirror frame with a running harebell border. The table with a polished porphyry top supported on turned and ebonized legs. 70 cm wide x 42 cm deep x 78 cm high (the console) 79 cm wide x 160 cm high (the mirror) (Qty: 2)  
Lot 19, Sotheby's Ariane Dandois sale, New York, 25 October 2007.  
A similar table with sphinx-carved mirror is preserved at Elghammar Castle outside Stockholm and is illustrated, Håkan Groth, *Neoclassicism in the North*, London 1990, p. 172.  
Another is reproduced Sigurd Wallin, *Möbler från Svenska Herremanshem*, vol. III, Stockholm, 1935, p. 170, fig. 1239.  
A closely related mirror with similar decoration is illustrated, *Empire*, Lahden Tuotepaino Oy, Lahti, 1994, p. 146, fig. 102.  
Torsten Sylvén illustrates two similar consoles with mirrors signed Jonas Frisks in *Spegel Spegelmarkare & Farbrikörer i Sverige 1650-1850*, Stockholm, 2000, pp. 128 and 129.  
**£15,000-25,000**





## Fine & Important European Furniture, Fine Art & Antiques, Thu, 31 March 2022 9:30

- 294 **A pair of rare and unusual Italian painted Lacca a Mecca and faux marble console tables, probably Rome, late 17th century.** Each with serpentine faux marble top supported by crouching figures of Roman slaves painted to simulate patinated bronze on rockwork bases with bold scroll feet. 107 cm wide x 49 cm deep x 95 cm high overall.  
Lot 16, Sotheby's 2 December 2008, London.  
Comparative Literature:  
Enrico Colle, *Il Mobile Baroco in Italia, Arredi e Decorazioni d'Interni dal 1600 al 1738*, Milan, 2000, pp. 114-115, no. 25.  
G. Lizzani, *Il Mobile Romano*, Milan, 1970, p. 73, plate 112.  
This unusual pair of console tables painted to simulate bronze with kneeling figures is characteristic of furniture which was being made for the most sumptuous Italian baroque interiors at the end of the 17th and beginning of the 18th centuries. The furniture was very sculptural and Colle, *op. cit.*, pp. 114-115, illustrates various console tables with these very sculptural figural supports.  
See also a Roman carved giltwood console table in the *Sala Grande* of the Galleria, Palazzo Colonna, Rome, which has supports in the form of reclining slaves conceived in a similar vein, illustrated by Colle, *op. cit.*, p. 115. The same author also illustrates another console table with kneeling supports in the *Sala della Colonna Bellica*, Galleria, Palazzo Colonna, Rome, p. 114. Finally Colle, *op. cit.*, p. 114, illustrates a table from the same group, stated to be post 1688, now in the *Sala dei Paessaggi*, Galleria, Palazzo Colonna, Rome, which was recorded as having been carved by Isidoro Beati. **£40,000-60,000**



- 295 **A Neopolitan suite of Neo-Classical mahogany and parcel-gilt seat furniture Naples, circa 1820.** The suite comprises a triple chair backed sofa and two armchairs on-suite with gilt metal mounts and pierced detail throughout. 97 cm high x 61 cm wide the chairs  
Lot 728, Sotheby's Ariane Dandois sale, New York, 25 October 2007. **£10,000-15,000**



- 296 **A pair of Neo-Gothic mahogany and beechwood throne armchairs, late 19th century, possibly Italian.** With arched backs upholstered in embossed leather with gilt decoration. The open arms with sphere pomels and scrolling infill. Supported by well-carved grotesque monopodia with inset glass eyes terminating in lions paw feet. 121 cm high x 69 cm wide  
Lot 168, Sotheby's Ariane Dandois sale, New York, 25 October 2007. **£8,000-12,000**

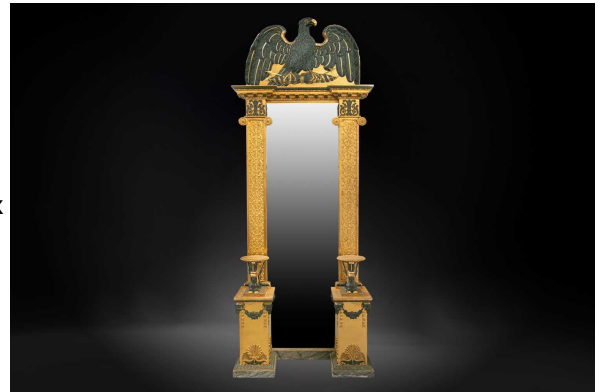


## Fine & Important European Furniture, Fine Art & Antiques, Thu, 31 March 2022 9:30

- 297 **An important Neo-Classical carved wood and gilt gesso pier mirror, attributed to Pehr Gustaf Bylander (1777-1852), Karl XIV Johan, c1825.** The inverted breakfront frame with massive eagle surmount above flat pilasters with Neo-Classical motif terminating in a pair of candle stands supported by sphinx painted to emulate bronze on a pair of bold rams head-mounted and swag draped plinths. 96 cm wide x 280 cm high x 35.5 cm deep.

Lot 561, Sotheby's Ariane Dandois sale, 25 October 2007, New York

Pehr Gustaf Bylander (1777-1852) was active in Gothenburg from 1810 until his death in 1852. He collaborated with architects such as Carl Wilhelm Carlberg (1746-1814) and Gustaf al Sillen (1762-1825) and provided furniture to country houses in Southern and Western Sweden, including Skottorp, Sperlingsholm and Stjernerund. Bylander was also one of Sweden's most prolific mirror manufacturers. The eagles on the present mirror can be compared with a pair in the Salon at Skottorp and illustrated in Håkan Groth, *Neoclassicism in the North*, London, 1990, pp. 174-175. **£10,000-15,000**



- 298 **A French Empire style carved wood and gilt gesso rectangular coffee table with plate glass inset top, 20th century, With tied reed "X" frame base and stylized dolphin terminals and leafy feet.** 127 cm long x 74 cm wide x 47.5 cm high **£200-300**



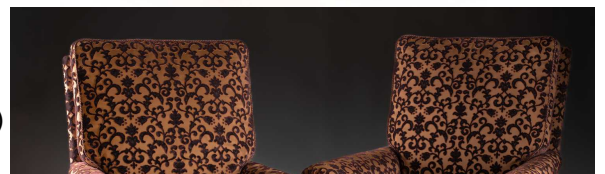
- 299 **\*Withdrawn\***



- 300 **A pair of 19th-century marble-topped carved painted and parcel-gilt mirror back console tables, French, Second Empire, 1850s,** each with guilloche decorated frieze with porphyry entablature Supported by a pair of caryatid term and mirror back on simple inverted breakfront plinth. 158 cm wide x 37.5 cm deep x 102 cm overall height (Qty: 2)  
Lot 193 , Sotheby's Ariane Dandois sale, 25 October 2007, New York. **£60,000-80,000**



- 301 **A pair of George IV rosewood and brass inlaid library bergeres, c1825. By Banting, France & Co.** With leaf carved scroll arms on leaf carved turned fore supports terminating in brass castors. 106 cm high x 84 cm wide x 76 cm deep (Qty: 2)  
Frederick William Hervey, 5th Earl of Bristol and subsequently



Buyers Premium 23% + VAT. Fully illustrated catalogue at [dawsonsauctions.co.uk](http://dawsonsauctions.co.uk).

## Fine & Important European Furniture, Fine Art & Antiques, Thu, 31 March 2022 9:30

1st Marquess of Bristol, (1769-1859) for 6 St James's Square and thence by descent until removed to Ickworth and sold by Frederick William John Augustus Hervey, 7th Marquess of Bristol (1954-1994) and then Lot 132, Sotheby's 6 July 2011, London

In his article 'Furniture in the East Wing at Ickworth' (Connoisseur, June 1971) and in his catalogue to 'Ickworth and the Herveys' (Bury St Edmunds), the late Edward Joy has dealt comprehensively with the furniture supplied to the 1st Marquess by Banting, France & Co for Ickworth, Suffolk the family's country residence and the London residence, 6 St James's Square and also Lord Bristol's house at Brighton. The invoices for this outstanding group of late Regency/George IV furniture are in the Hervey papers at the Record Office in Bury St Edmunds. The furniture, now under the ownership of the National Trust can still be seen to a large extent at Ickworth, those items commissioned for St James's Square being moved there sixty years or so ago. Joy writes in his catalogue introduction 'The firm of Banting was one of the greatest furniture-making firms of the nineteenth century and had royal warrants during the reigns of King George III, George IV, William IV and Queen Victoria'.



The earliest title was Banting, France & Co. at the address 22 Pall Mall, whence they supplied furniture as early as 1813 to the Duke of Sussex in Kensington Palace. They appear in the Windsor Castle archives in the George IV accounts, supplying furniture to the King in 1825. They subsequently made furniture of all kinds for the royal residences, including St. James's Palace, Windsor Castle and Buckingham Palace. At the beginning of Queen Victoria's reign, the firm moved to 27 St James's Street which was to remain their permanent address. Their name was variously Thomas and William Banting, Banting & Co. and Banting & Son. The firm gained an honourable mention for their display at the Great Exhibition, London, 1851; their exhibits included a circular marquetry table, a sideboard made from oak grown in Windsor Forest, a satinwood china cabinet, a secretaire cabinet of kingwood and an oval table of amboyna wood. They also won praise for their exhibits at the Paris Exhibition in 1855.

The first record of a relationship between the Bristols and the firm comes in 1810 when Messrs France and Banting of St. James's Street Haymarket (as originally called) provided warehousing space for Lord Bristol's picture collection that they had valued by Francis Spurrier. In 1815 Banting and France- the names had reversed by this date- organised the sale of furniture from 6 St James's Square (Suffolk County Records Office 914.81/17). Renovation of the Bristol London home continued for at least three years as seen in the household accounts which, though detailing expenditure of carpets, curtains and even new window frames and furniture mentions no suppliers or tradesmen by name (S.C.R.O 914.88/5-11), but does mention two sofas and two armchairs in rosewood which could be the present lot.



## Fine & Important European Furniture, Fine Art & Antiques, Thu, 31 March 2022 9:30

The present chairs are identical to chairs and sofas in the library of Ickworth and can be seen illustrated in John Martin Robinson, *The Regency Country House from the archives of Country Life*, London, 2005, pp.120-121.

Bantings' furniture now at Ickworth is of exceptional interest not only because it is the work of a royal cabinet maker but also because it shows high-class English furniture at the very end of the Georgian period. The finest pieces are executed in rosewood and mahogany; the materials used are of superb quality and the craftsmanship is excellent, all of which attributes can be seen in the present lot. **£7,000-10,000**

- 302 A French Louis XV carved wood and gilt gesso fauteuil, c1760s, with floral leaf carved moulded frame above swept arms, serpentine seat and supported on cabriole legs. 70 cm wide x 60 cm deep x 105 cm high  
Property of Gentleman **£400-500**



- 303 A pair of Italian Neo-Classical, ormolu and gilt brass mounted figured walnut pedestals, Ferdinand VII, c1820. With canted tapering triangular bodies and stop fluted bands each fitted with anthemion and wreath appliques. Supported on moulded plinth bases. 49 cm wide x 100 cm high. (Qty: 2)  
Provenance: Lot 4, Sotheby's Ariane Dandois sale, New York, 25 October 2007. **£8,000-12,000**



- 304 A pair of George III carved wood and gilt gesso armchairs, in the manner of Thomas Chippendale, c1770. The cartouch shaped backs with applied honeysuckle cresting and a pair of shaped arms with crisp acanthus terminals above a serpentine seat with arcaded seat rail Supported on turned and fluted rear and fore supports. 96 cm high x 56 cm deep x 62 cm wide  
Lot 264, Sotheby's 2 November 2011, London  
The design of the present pair of chairs closely relates to two sets of chairs supplied by the St. Martin's Lane cabinet-maker and upholster, Thomas Chippendale, (d.1779) for the Adam designed drawing rooms of Saltram, Devon and Harewood House, Yorkshire, illus. Christopher Gilbert, *The Life and Work of Thomas Chippendale*, London. 2 vols, Vol.II, p.110 and p.167. For further comparison, see Christie's London, *Dealing in Excellence, A Celebration of Hotspur & Jeremy*, 20th November 2008, lot 62. **£3,000-5,000**



## Fine & Important European Furniture, Fine Art & Antiques, Thu, 31 March 2022 9:30

- 305 **Attributed to Town & Emanuel, an important, William IV brass inlaid figured rosewood kneehole writing table, c1830.** The top is inlaid with contre partie scenes of winged cherubs, fantastic creatures and strolling musicians within a formal framework in the style of Jean Berain. Fitted five drawers arranged around a central kneehole, on bold footless cabriole legs with similar inlaid decoration. 122 cm long x 68.5 cm deep x 84 cm overall height, 60.5 knee height.  
Lot 151, Sotheby's Ariane Dandois sale, 25 October 2007, New York,  
Lot 37, Christie's, The Lord White of Hull sale 16 October 1998



Lot 213, Sotheby's 7th April 1990, New York  
Lot 320 Sotheby's 7th-8th June 1985, New York  
Lot 75 Christie's 29th November 1984, London  
Illustrated, G. Beard and J. Goodison "English Furniture 1500-1840" p.275 fig.3.  
This desk exemplifies the aristocratic taste for French designs of the *ancien regime* and the revival of 'buhl' patterns based on prototypes by royal *ebeniste* Andre-Charles Boulle and the designs of Jean Berain. The desk is attributed to the London firm of Town & Emanuel, dealers, manufacturers and restorers working at 103 New Bond Street from 1830 until the sale of their stock in 1849. Their printed trade label advertised the firm as 'Manufactureres of Buhl Marqueterie, Riesner & Carved Furniture, Tripods, Screens & of the Finest & Most Superb Designs of the Times of Louis 14th...' (reproduced in F.Collard, 'Town & Emanuel', *Furniture History*, 1996, p.82, fig.1). The inlaid design of the top relates closely to that on a writing-table at Hinton Ampner, Hants (see C.Gilbert, *Pictorial Dictionary of Marked London Furniture 1700-1840*, Leeds, 1996, p.451, figs.905-906). Another virtually identical writing-table was probably supplied to the 2nd Marquess of Exeter for Burghley House (illustrated in F.Collard, *op.cit.*, p.85, fig.5). Other cabinetmakers inspired by Boulle prototypes include Thomas Parker of Air Street and Louis Le Gaigneur of Edgware Road, both of whom supplied furniture to George IV.

A French prototype of this basic form and decoration in the collection of the Victoria and Albert Museum, London is illustrated in C. Parker, *Paris Furniture by the Master Ebenistes*, Newport, England, 1956, fig.2.

Credit: Messrs Christie's **£7,000-10,000**

## Fine & Important European Furniture, Fine Art & Antiques, Thu, 31 March 2022 9:30

- 306 **An Empire-style ormolu mounted mahogany oval center table, possibly Spanish first quarter of the 19th century.** The figured top with inset black marble panel the frieze fitted a single drawer and two leathered candle slides to either side, on plain architectural supports decorated with neoclassical ormolu appliques throughout, supported on a concave square base. 121 cm long x 92 cm wide x 72 cm overall height, 59 cm to the underside of the frieze.  
Lot 2, Sotheby's Ariane Dandois sale, New York, 25 October 2007.  
Formerly of the Gucci collection, Milan, Tajan, Paris December 12th, 1995 **£10,000-15,000**



- 307 **Attributed to Nicholas Sageot (1666-1731) an important red Boule and engraved brass contre partie marquetry bureau Mazarin, Louis XIV late 17th early 18th century.** Decorated with whimsical scenes in the style of Jean Berain with sphinx and other fantastic creatures, monkeys and a colourful figure below a lambrequin canopy inlaid with mother of pearl, stained ivory, hardstone and copper foil. Fitted a central kneehole with three shaped drawers flanked on each side by three bow-fronted pedestal drawers and canted carcass. Supported on similarly inlaid Vitruvian or "S" scroll legs united by shaped under stretchers and gilt turned feet. 148 cm long x 77.5 cm deep x 86 cm overall height  
Provenance: Lot 24, Sotheby's Ariane Dandois sale, New York, 25 October 2007.



**Nicholas Sageot (1666-1731), received Master 1706:**

He was born in Samaize-les Bains and appears to have become active around 1690 and is first recorded as working in Grande rue du Faubourg-Saint-Antoine in 1698 where, before being accepted by the cabinet-makers guild, he had worked as an *ouvrier libre*. He married, in 1711, Marie Brigitte Roussel, the daughter of the *ébéniste* Jacques Roussel and his workshop appeared to prosper until around 1720, when he stopped working and sold his stock. His production seems to have principally consisted of important armoires, commodes and bureaux. He entered into a commercial arrangement with Léonard Prieur, '*Marchand Mercier Grossier joaillier Priviligié suivant la Cour*', on 26th July 1720. As a result of this, he sold furniture and various materials to him for 16000 *livres*; the armoires, priced from 400 to 1000 *livres* were the most expensive pieces (see Grand *op. cit.*,). Upon the death of his wife, in 1729, the inventory of their workshop records an important stock of brass and tortoiseshell.

For similar examples of bureaux attributed to Nicholas Sageot see lot 810, Lempertz, sale 17/05 2019 (sale 1131) **£20,000-30,000**

## Fine & Important European Furniture, Fine Art & Antiques, Thu, 31 March 2022 9:30

- 308 A Second Empire style ebonized and parcel-gilt rectangular glass-topped coffee table. With pierced swag frieze stylized legs in the form of bundles of arrows tied with a cord. 133 cm long x 83 cm wide x 48 cm high  
Property of a gentleman **£200-300**



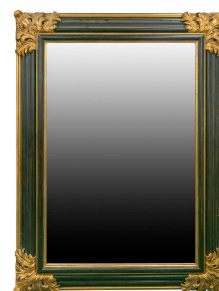
- 309 An Italian carved wood giltwood and gilt lead sixteen sconce hanging chandelier Possibly Neapolitan c1820. With floral scrolling arms, the bowl with applied stylized anthemion decoration and a cut-glass sphere drop finial fitted a later coronet form corona. 129 cm high x114 cm diameter  
Lot 660, Sotheby's Ariane Dandois sale, New York, 25 October 2007. **£1,000-1,500**



- 310 A Neo-Classical style carved wood and gilt gesso wall mirror, 20/21st century. With lyre decorated frieze and redded flat pilasters. 113 cm x 200 cm **£150-200**



- 311 A large and impressive ebonized and parcel-gilt rectangular wall mirror, 20th century. With deep moulded frame and gilt acanthus corners. 163 cm x 121 cm  
Property of a gentleman **£200-300**



- 312 A Swedish Karl XIV Johan gilt-copper-mounted mahogany mirror Sweden, circa 1825. With a gilt flowering basket to the frieze and tumbling stylized flowers to the flat pilasters. 160 cm high x 75 cm wide  
Lot 420, Sotheby's Ariane Dandois sale, New York, 25 October 2007. **£1,500-2,000**





## Fine & Important European Furniture, Fine Art & Antiques, Thu, 31 March 2022 9:30

- 313 An 18th-century style carved, pierced and giltwood wall mirror, 20th century in the Venetian taste, with heavy shell cresting to the arched frame. 84 cm wide x 145 approximate height **£150-200**



- 314 A Danish Neo-Classical mahogany and parcel-gilt wall mirror, late 18th century, with tied ribbon cresting above a gilt profile portrait medallion to the frieze above a moulded frame. 152 cm high x 53 cm wide  
Lot 443, Sotheby's Ariane Dandois sale, New York, 25 October 2007. **£2,000-3,000**



- 315 A pair of Swedish Neoclassical ormolu, cut-glass and blue-glass four-light girandoles. 97 cm high x 44.5 cm wide  
Lot 525, Sotheby's Ariane Dandois sale, New York, 25 October 2007.  
A very closely related pair of girandoles is illustrated in Bo Vahlne, *Nyintedningen av Rosersbergs slott 1797-1818 - en ikonologisk study*, Stockholm, 1988, p. 79. **£3,000-5,000**



- 316 A shagreen effect porcelain two handle urn and cover, 20th century. 41 cm high approximately together with a large clear glass and gilt metal three sconce table lamp, an amber glass table lamp and a large decorative tole ware tea canister and cover. (Qty: 4) **£150-200**



- 317 A French gilt metal mounted rouge marble urn form table lamps with lion's mask handles, 41 cm high (just the lamp) together with a French Empire style faux basalt and gilt metal four sconce table lamp and a pair of gilt brass rococo wall sconces. (Qty: 4) **£150-200**

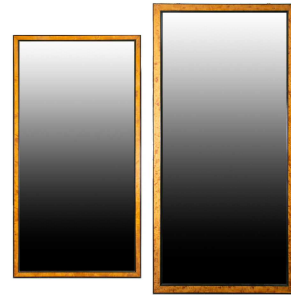


## Fine & Important European Furniture, Fine Art & Antiques, Thu, 31 March 2022 9:30

- 318 A pair of 18th-century Italianate style carved wood and gilt iron girandole, 20th century. Each fitted with a patinated mirror plate and a pair of scroll arm electric candle sconces. Together with a pair of gilt wall sconces and another larger (Qty: 5) **£150-200**



- 319 A late Victorian figured satinwood and ebonized rectangular wall mirror with moulded edge and one larger similar wall mirror. 194.5 cm high x 96.5 cm wide and 152.5 high cm x 82.5 cm wide **£200-300**



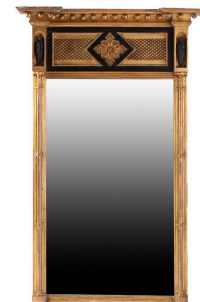
- 320 A Dutch floral marquetry and mahogany rectangular wall mirror, 19th century, with reverse cut stars to the bevelled mirror plate, together with an early 18th-century style walnut drawer based toilette mirror, a parcel-gilt and mahogany effect wall mirror (20th century) and a cross-grain walnut folding triptych dressing table mirror (Qty: 4) Private collection **£100-150**



- 321 An 18th-century style Italian Piedmont style carved wood and gilt gesso arch-topped wall mirror, 19th century. With openwork cartouch crestring and mantled scroll borders above a pair of extended scroll faux supports. 85 cm wide x 146 cm overall height x 20 cm depth of projection of crestring Private collection **£250-350**



- 322 A Regency inverted breakfront gilt pier-glass, early 19th century, with sphere set corning and triple column pilasters each headed ebonised classical muse within arched niches. 101 cm high x 65 cm wide. Private collection **£200-300**



## Fine & Important European Furniture, Fine Art & Antiques, Thu, 31 March 2022 9:30

- 323 A Queen Anne carved wood and gilt gesso pier mirror with swan neck pediment and leafy mantle above a 'Dublin shell', matted ground with carved and moulded borders, housing a shaped and bevelled mirror plate above a corresponding apron. 70 cm wide x 176 overall height  
Private collection **£300-500**



- 324 A Chinese carved pierced and giltwood wall mirror of hipped arched form, 20th century, decorated with birds, bats and fruiting vines. 57 cm wide x 118 cm high **£150-200**



- 325 A pair of George III Adam style gilt framed oval mirrors, 20th century, with moulded paterae between beading and rope twist borders, 80cm x 99.5cm **£100-150**



- 326 A near pair of probably late 18th century/ early 19th-century carved wood and gilt gesso Florentine wall mirrors of cartouch form. 54 cm high x 35 cm wide **£150-200**



- 327 A 19th century carved wood and gilt gesso overmantle mirror the frieze moulded with the chariot of Apollo flanked by Corinthian column pilasters and fitted three bevelled mirror plates. 143 cm wide x 92 cm high. Together with a 19th-century rectangular carved wood and gilt gesso wall mirror. 53 cm x 91 cm (Qty: 2) **£100-150**



## Fine & Important European Furniture, Fine Art & Antiques, Thu, 31 March 2022 9:30

- 328 An Eastern silk on silk carpet with ivory ground 20th century, probably Indian, with central star-shaped Medallion and corresponding corners within floral and urn decorated borders, fringed at both ends. 306 cm long x 195 cm wide.  
Private collection **£200-300**



- 329 A 20th century Bokhara Suzani with a raspberry coloured ground and decorated with fuchsine (rose pink) and ochre yellow bands and stylized motifs. 254 cm x 232 cm **£500-700**



- 330 An Eastern crimson ground silk on silk rug, 20th century, Indian, With flowering censer design within a dark blue palmetted border. 183 cm long x 126 cm wide  
Private collection **£150-200**



- 331 An ivory ground Perpedil style rug with geometric star lattice within Kufic and ram's head border. 200 cm long x 132 cm wide.  
Private collection **£150-200**



- 332 Green marble urn form table lamp, 20th century. With gilt bronze goat mask handles and fittings on a square base. 24 cm wide x 51 cm high (the actual lamp)  
Private collection **£200-300**





## Fine & Important European Furniture, Fine Art & Antiques, Thu, 31 March 2022 9:30

- 333 A pair of gilt bronze four sconce figural candelabra of rococo form. Each column is cast with embracing cherubs amongst scroll motifs over a shell moulded bases with three shaped squat feet. Now fitted for electricity with simulated candles. 25 cm wide x 71 cm overall height ( 48 cm high, just the candelabra) **£300-500**



- 334 A Victorian iron and brass Corinthian column standard lamp with telescopic action over a stepped architectural base and lion's paw feet. Fitted with a Japanese (Nihon Shishu type ) embroidered and stretched silk shade. 178 cm high overall. **£100-150**



- 335 A large pair of brass and nickel-plated ship's search lamps with swivel and inclining bases 45 cm wide x 53cm high (at this adjustment) (Dimensions: p) (Qty: riva)  
Private collection **£400-600**



- 336 A French Empire design gilt bronze table lamp of open classical form, 20th century. With rams head boss and a square base. 54 cm overall height. Together with a pair of gilt metal demi lune two branch wall sconces with hanging cut glass lustres 40 cm wide x 36 cm high **£200-300**



- 337 A wooden Venetian gondola lamp, blue and gilt painted, converted to a standard lamp with iron column on a hexagonal wooden base, 228 cm high. **£200-300**



## Fine & Important European Furniture, Fine Art & Antiques, Thu, 31 March 2022 9:30

- 338 A pair of large crystal glass table lamps, with gilt metal mounts, of globular form on a circular base, 94 cm high (to include the shades), together with a single gilt and alabaster column table lamp, 83 cm high (to include shade). (Qty: 3) **£150-250**



- 339 Fonderia Sommer: a late 19th-century Grand Tour Italian large cast bronze figure of Narcissus, after the antique, on a decorated round base, engraved 'Fonderia Sommer, Napoli', 64 cm, with associated velvet-topped circular stand. **£800-1,200**



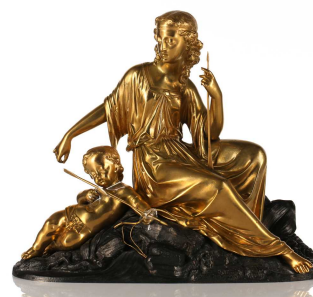
- 340 A well cast Romano British bronze figure of the goddess Salus/Hygeia, circa 2/3 AD, wearing a long robe, a cornucopia in her left hand and a short staff in her right, on a circular base with cast hole at the rear, 7cm  
From the private collection of a deceased estate. With the original receipt of purchase from B A Seaby Ltd, 1981, £530. Noting that it was found to the west of Bradford on Avon, Wilts. **£300-500**



- 341 Robert Wyland (b.1956) American, a large limited edition acrylic display sculpture, dolphins in the surf, numbered 603/750, 39 cm high x 47 cm wide. **£600-800**



- 342 An ormolu figure group depicting Venus and Cupid, mounted to a patinated bronze base, 24 cm high x 27 cm wide. **£200-300**



## Fine & Important European Furniture, Fine Art & Antiques, Thu, 31 March 2022 9:30

- 343 Emile Louis Picault (1833-1915), 'La Forge', a large patinated bronze figure, inscribed 'Salon 1905' and numbered 8623, 65.5 cm high. **£600-800**



- 344 A Copeland 'Art Union of London' parian bust of Princess Alexandra, late 19th century, designed by Mary Thorneycroft, 33 cm high, together with a parian bust of the composer Ignace Jan Paderewski, by Robinson & Leadbetter, 20 cm. (Qty: 2) **£150-250**



- 345 A late 19th or early 20th century bronze bust of Sappho, loose on a shaped marble base, 29 cm high x 33 cm wide, unsigned. **£200-300**



- 346 After Moreau, a lost wax cast bronze figure group of a mother and daughter observing a snail on a fruiting vine, 19th century with a deep dark brown/green patina on a naturalistic base bearing a cast inscribed artist's signature. 26 wide x 33 cm high Private collection

The Moreau family's dynasty begins with Jean Baptiste Moreau, who was born in Dijon, France at the end of the 18th century. Jean Baptiste had three sons who followed in his footsteps, they were Auguste, Mathurin and Hyppolyte-François. The legacy continued with Auguste's sons, Louis Auguste and Hyppolyte Francois. Members of the Moreau family often studied at the famous École des Beaux-Arts in Paris. **£300-500**



- 347 After Jean-Antoine Houdon (1741-1828), 'Le Baiser Donné' (The Kiss Bestowed), a 19th-century patinated bronze figure group, on a square Siena marble base, 15.8 cm high x 11 cm wide. **£300-500**



## Fine & Important European Furniture, Fine Art & Antiques, Thu, 31 March 2022 9:30

- 348 After Clodion ( Claude Michel 1738-1814), a pair of patinated bronze figures of young Nymph and Satyr, 19th century both in playful mien upon naturalistic tree stump bases, marked 'Clodion' to the reverse, now loose mounted on circular Sienna marble socles, 30 cm high the actual figures.  
private collection **£400-600**



- 349 After Wilhelm Schaffert (19th/20th century), a pair of patinated bronze figures, a young boy and girl, each wearing clogs, on cylindrical marble bases, 19 cm high. (Qty: 2)  
Ex Christie's, 13th May 1998, Lot 365. **£300-500**



- 350 A carved white marble bust of a young girl with a simple gown about her neck, on a concave moulded square socle. 22 cm wide x 22 cm deep x 37 cm high  
Private collection **£200-300**



- 351 A large late 19th-century patinated bronze figure of Mercury, balanced on a figural water spout, manner of Barbedinne, mounted to a green marble pedestal base, 66 cm high. **£300-500**



- 352 Georg Heyde of Dresden a cold painted metal, anthropomorphic figure group of "Nodder" cats with nodding heads dressed as 19th ladies taking tea at a table whilst attended by a similarly styled cat waitress, sometimes referred to as a "Hen Party" group cats with shaking heads, and a miniature table. 7.5 cm high the tallest. **£200-300**





## Fine & Important European Furniture, Fine Art & Antiques, Thu, 31 March 2022 9:30

- 353 A pair of large terracotta busts, 20th century, depicting Classical figures after the antique, on conforming Corinthian pillars, each c. 184 cm high. (Qty: 2)  
Private collection, **£600-800**



- 354 After Hippolyte François Moreau (French, 1832-1927), a lost wax cast bronze figure of a country maiden with a posy of flowers in her hand and a lute at her hip with rich "nut-brown" patina. Bearing the cast incised artists signature to the naturalistic circular base. 17 cm wide x 50 cm overall height  
Private collection

Artist Hippolyte Francois Moreau was a classically trained French sculptor born in 1832. He initially worked under his father and world-famous sculptor, Jean-Baptiste Moreau, before moving to Paris to work and study under François Jouffroy. From 1863 to 1914, artist Hippolyte **£300-400**



- 355 A large and decorative resin bust of Apollo, after the antique, 20th century, 46 cm high x 37 cm wide. **£100-200**



- 356 A large early 20th-century plaster bust of a woman, painted in polychrome enamels, on a circular black socle, 57 cm x 36 cm. **£200-300**



- 357 After Jean-Marie Pigalle (French, 1792-1857) cast bronze figure of Cupid, 19th century, standing with his bow and a quiver of arrows with rich dark green patina, the circular base bearing cast incised artists signature. 37 cm high.  
Private collection **£150-200**



## Fine & Important European Furniture, Fine Art & Antiques, Thu, 31 March 2022 9:30

- 358 After Ernest Rancoulet (b.1842), 'Le Genie du Progres', a large spelter figure group on a wooden (faux marbre) base, 68 cm high. **£100-200**



- 359 After Christophe Fratin, ( French 1808-1864 ) A lost wax cast bronze study of a mare and her foal with deep khaki/ brown patina, the rectangular base bearing a cast incised artist's signature and mounted on a green sub base. 30 cm long overall x 17 cm wide overall x 24 cm high overall  
Private collection

Christophe Fratin, also known as Christopher Fratin, was a noted French sculptor in the animalier style, and one of the earliest French sculptors to portray animals in bronze. He exhibited at the Paris Salon from 1831-1842 and 1850-1862, as well as at the Great Exhibition in London in 1851. **£200-300**



- 360 A small enamelled white metal icon of the Black Madonna of Częstochowa on a velvet-covered board 4.8 cm x 3.8 cm. Together with a gilt metal miniature folding devotional triptych of gothic lancet form 11.5 cm high x 11 cm wide (open) (Qty: 2) **£100-150**



- 361 A Swedish Neo-Classical ormolu and patinated bronze five-light candelabrum circa 1810, attributed to R.F. Lindroth. With classical muse term column on a cylindrical sub base with a stylised coat of arms supported on a square plinth. 62 cm high Lot 594, Sotheby's Ariane Dandois sale, New York, 25 October 2007.

Reinhold Fredric Lindroth (1790-1840) was active in the Swedish and Russian courts. An identical model is in the Nordiska Museet in Stockholm, another is recorded as sold or missing from the Hermitage Museum. A closely comparable pair of candelabra is illustrated, G. Wannenes, *Les Bronzes Ornementaux et les Objets Montés*, Milan 2004, p. 382. **£4,000-6,000**



- 362 19th century school, a portrait miniature of Major Richard Lothian Dickson (1798-1828), 35th and 58th Foot and 1st Life Guards CBC, in oval frame with hair samples verso, mounted in an easel stand, the portrait 7 cm x 5.6 cm. **£150-250**



## Fine & Important European Furniture, Fine Art & Antiques, Thu, 31 March 2022 9:30

- 363 A Georgian era portrait miniature of a gentleman in military uniform, possibly Fusiliers, in original brass frame with brooch fitting, 5.8 cm x 4.7 cm.  
Property of a lady. **£150-250**



- 364 A Georgian miniature portrait mourning pendant, painted on ivory, with hair sample verso, gold mounted with seed pearl monogram, 3.6 cm x 2.5 cm.  
Property of a lady. **£200-300**



- 365 A pair of ormolu two branch candelabra, 19th century, each with scrolling arms and removable nozzles over a similarly designed base. 25 cm wide x 19 cm high.  
Private collection **£100-200**



- 366 A Georgian portrait miniature on ivory, of Richard 5th Viscount Powerscourt, within a heavy brass frame and inscription verso, 9.5 cm x 7.5 cm.  
Property of a lady. **£400-600**



- 367 A 19th-century portrait miniature of an officer, East India Co, 9.5 cm x 7.5 cm, together with a smaller example. (Qty: 2)  
**£200-300**



## Fine & Important European Furniture, Fine Art & Antiques, Thu, 31 March 2022 9:30

- 368 **A fine pair of Retour D' Egypte ormolu and patinated bronze four sconce candelabra, in the manner of Pierre Philippe Thomire, early 19th century possibly Naples, Italy.** Each with gilt scrolling branches issuing from Egyptian style female figures, on architectural veined marble architectural plinths with sepulchral appliques. 77.5 cm high overall  
Lot 90, Sotheby's Ariane Dandois sale, 25 October 2007, New York.

LOT 382, Sotheby's, 13 June 2001, London

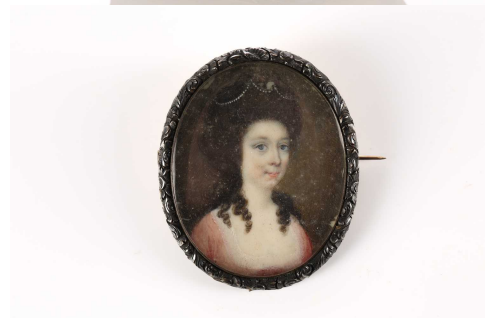
Probably based on a similar pair that can be seen in the Louvre that are to a design by Charles Percier (RF30630) the column design was originally taken from a sketch and was originally conceived as caryatid supports for a table. **£10,000-12,000**



- 369 **A Victorian carved rectangular mahogany offertory box with honeysuckle and trumpet flowers and carved and applied at the angles with fantastic beast monopodia. supported by four gilt brass ball feet.** 15 cm long x 14 cm wide x 12 cm high.  
Private collection **£100-150**



- 370 **A Georgian era portrait miniature brooch of a young lady of Sarah Lill, (b 1754) the second daughter of Judge Godfrey Lill (1719-1783). Solicitor General at the Court of Common Pleas. Her sister Mary Charlotte Lill married (1784) Lt. Colonel William Brereton (b 1752); fought in the American War of Independence.**  
Property of a lady. **£150-250**



- 371 **A pair of small 19th century framed portraits, depicting a smartly dressed gentleman and lady, oil on canvas (laid on board), 12 cm x 9.5 cm, together with a watercolour portrait of a lady reafing a book, signed 'A Latchford' and a further gilt-framed portrait of Lord Byron (after the 1813 original by Richard Westall), text verso reading 'For Frederick Jones, 1836'. (Qty: 4) **£100-200****



- 372 **A fine 19th-century French ormolu and champlevé enamel dressing table garniture, comprising an oval mirror and a pair of candelabra, the mirror with blank cartouche and floral surmount, flanked by twin putti on a scrolled base, lion paw feet, 50 cm high x 30 cm wide, the conforming five-sconce candelabra each with applied mask decoration on a shaped square base, 44 cm high. (Qty: 3) **£300-500****





## Fine & Important European Furniture, Fine Art & Antiques, Thu, 31 March 2022 9:30

- 373 A pair of Italianate wrought iron shelf brackets, possibly Venetian early 20th century, with pierced scroll decoration incorporating winged figures and dragons, 48.5 cm high x 67 cm. **£150-250**



- 374 A pair of massive, carved wood and gilt gesso thirteen sconce candelabra, possibly French or Russian early 19th century c1830. With scrolling arms above a reeded column over a triliteral base carved with swans and neoclassical motif, 133 cm high x 60 cm wide (Qty: 2)  
Provenance: Lot 87, Sotheby's Ariane Dandois sale, 25 October 2007, New York, **£8,000-10,000**



- 375 A late 18th century portrait miniature (on ivory), of General Thomas Cox, 3.4 cm x 2.8 cm in a brass pendant frame. **£150-250**



- 376 Louis Sosson (20th century) French, 'Awakening', a carved ivory figure of a young woman, circa 1925, on an onyx base, 15 cm high.  
Bonhams Sale 24237 (Sept. 2017), Lot 232 **£800-1,200**



- 377 A framed collection of hand-painted porcelain plaques, each depicting images from famous works, the frame 30 cm square. **£100-200**



## Fine & Important European Furniture, Fine Art & Antiques, Thu, 31 March 2022 9:30

- 378 A 20th-century wall tapestry, depicting medieval figures in a marriage scene, 63 cm x 76 cm glazed in a gilt frame. **£150-250**



- 379 A pair of Georgian woolwork scenes; family group pictures with trees in background, each 18 cm x 23.5 cm, framed and glazed. **£200-300**



- 380 A 19th-century painting on silk, depicting female Greek dancers within a floral border, 64 cm x 135 cm framed and glazed. **£150-250**



- 381 A late 19th / early 20th-century brass jardiniere, in the Art Nouveau style with inset turquoise cabochon stone and repoussé foliate motif, 21.5 cm high x 28 cm diameter at the top. **£80-120**



- 382 A pierced and engraved white metal baroque Diadema/ crown with applied polished cabochons above a beaded band. 17 cm diameter x 18.5 cm high **£200-300**



## Fine & Important European Furniture, Fine Art & Antiques, Thu, 31 March 2022 9:30

- 383 A small Modernist bronze sculpture, of abstract form on a square base, 13.5 cm high x 10 cm wide. **£100-150**



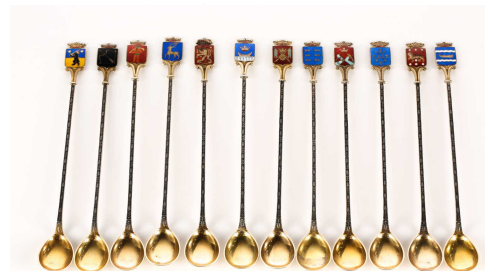
- 384 A Continental stained and leaded glass window, 19th century, depicting figures in a river landscape with a cathedral and other buildings. within a bottle green border. 48.5 cm x 40 cm **£100-150**



- 385 A 19th century Grand Tour circular micro mosaic view of The Rialto Bridge, Venice, in a carved oak frame, 25.8 full diameter, the panel 15 cm. **£800-1,200**



- 386 A set of twelve Swedish silver-gilt (813) long teaspoons each enamelled with the arms of the regions of Sweden (?) 5.2 ozt gross weight **£120-140**



- 387 An Edwardian silver and crocodile leather hip flask. London 1903 by William Hutton and Sons, the pull-off beaker with a gilded interior. Bayonet cover, London 1904. 16cm length. **£100-200**



## Fine & Important European Furniture, Fine Art & Antiques, Thu, 31 March 2022 9:30

- 388 A Culpepper Instruments brass equatorial sundial, No 070779, 20th century. With silvered register, on a turned conical base. 19.5 cm overall width x 36 cm overall height **£150-200**



- 389 A 20th-century single fusee skeleton clock with a barbed outline fitted a shaped and silvered chapter ring and the halberd chiming on a single bell. On a moulded and ebonized base (No dome) 28 cm wide x 18 cm deep at the base x 38 overall height **£300-400**



- 390 A French 8-day figural mantle clock, early 20th, century, depicting the disarming of Cupid after L & F Moreau, with white and floral enamel dial and chiming on a single bell on a rouge marble base. 32.5 cm high x 43 cm high x 14.5 cm deep **£100-200**



- 391 An early 20th century 8-day triple train mantle clock with "Westminster" chiming on rod gongs fitted a tooled and silvered one piece arched dial with advance and retard and strike silent subsidiary dials in the arch. The architectural mahogany case on a simple moulded plinth and bun feet. 28.5 cm wide x 19.5 cm deep x 42 cm overall height. **£200-300**



- 392 An F. Darton & Coles mahogany cased barograph with bevelled glass panels and a frieze drawer containing spare paper charts and supported on simple bun feet. 36.5 cm long x 21.5 cm x 23 cm high. Together with an unusual American "Lux" tape clock of puck form. **£200-250**





## Fine & Important European Furniture, Fine Art & Antiques, Thu, 31 March 2022 9:30

- 393 A Franz Denk of Wien single fusee skeleton timepiece with pinwheel escapement enamel chapter ring and day date and moon phase subsidiary dials. on a moulded and ebonized base under a blown glass domed dust cover. 34 cm wide x 19 cm deep at the base x 42 cm overall height of dome when in place **£800-1,000**



- 394 A large early 20th-century Winterhalder & Hofmeier 8-day mantle clock with ting-tang chiming on two coil gongs and fitted a matted brass dial with silvered chapter ring dial and strike silent and advance and retard subsidiary dials The oak "broken arched" case on. The architectural walnut case with carved detail and supported on simple block feet. 31 cm wide x 19.5 cm deep x 42 overall height **£200-300**



- 395 A large early 20th-century Winterhalder & Hofmeier 8-day mantle clock with ting-tang chiming on two coil gongs and fitted a slightly convex silvered dial marked in Roman numerals The oak "broken arched" case on simple turned wood bun feet 28.5 cm wide x 17.5 cm deep x 38.5 overall height **£200-300**



- 396 A French ebonised lyre-shaped 8-day portico mantle clock, 19th century by Marti and Sons, the case inlaid with brass, mother of pearl, and tortoiseshell decoration, the movement chiming the hours and half hours on a coil gong and fitted a white enamel dial and a decorative cast grid iron type pendulum. 27 cm wide x 49.5 cm high x 13.5 cm deep. **£200-300**



- 397 A 20th century Hermle Laterndluhr cased month going two-weight Regulator wall clock with day/date and month subsidiary dials and chiming on a single-coil gong. 128 cm high x 31 cm wide. **£800-1,000**



## Fine & Important European Furniture, Fine Art & Antiques, Thu, 31 March 2022 9:30

- 398 A small early 20th-century single fusee gothic skeleton timepiece with a skeletal silvered chapter ring. 22 cm wide x 30 cm high **£200-250**



- 399 A French mahogany cased balloon 8-day clock with visible Brochet movement by Samuel Marti et Cie, first quarter of the 20th century and some adaptation to the case, chiming the hours on a single bell. 19 cm wide at the base x 35 cm high. **£150-200**



- 400 A 19th century ebonized 30-hour Duru of Paris portico timepiece with elaborate gridiron pendulum. The case with brass stringing and gilt brass neoclassical appliques on a simple architectural plinth base. 22.5 cm wide x 13.5 cm deep x 45 cm high **£200-300**



- 401 A Royal Geographic Society World clock with rotating terrestrial globe within a gilt metal chassis on an ebonized moulded wooden base with Royal Geographical Society plaque. 22.5 cm x 22.5 cm x 31 cm high **£300-320**



- 402 Samuel Marti a French white marble and ormolu clock garniture, early 20th century, the 8-day clock in an architectural case with triumphal military trophy surmount above a dial marked in Arabic numerals and decorated with swags of flowers and marked "Comptoir General." Accompanied by a pair of matching two sconce candelabra each mounted with a flaming quiver of arrows motif on corresponding white marble bases with toupee feet. 18 cm wide x 34 cm high x 12 cm deep (the clock) (Qty: 3) Private collection **£200-300**



## Fine & Important European Furniture, Fine Art & Antiques, Thu, 31 March 2022 9:30

- 403 A 19th century French gilt metal boudoir clock garniture, the painted enamel dial bearing Arabic numerals, in a rococo style case on a pink marble base, with twin candlesticks, all adorned with putti, the clock 28 cm high. **£150-250**



- 404 An early 20th century walnut grandmother clock, the domed hood above brass dial with 'Tempus Fugit' disc to the arch and inscribed 'Mappin & Webb' to the silvered chapter ring, pendulum present, 81.5 cm high. **£100-200**



- 405 A large early 20th-century Winterhalder & Hofmeier 8-day mantle clock with ting-tang chiming on two coil gongs and fitted a slightly convex silvered dial marked in Roman numerals. The satinwood strung arched case with a presentation plaque, above simple bun feet. 27 cm wide at the base x 16 cm deep x 35.5 cm overall height **£200-300**



- 406 A.D. Mougin, a French white marble and ormolu mounted clock garniture, late 19th/20th century. The clock supported on the backs of a pair of putti, the dial marked in Arabic numerals and decorated with swagged garlands below an amatory trophy mounted on a rectangular base with toupe feet, accompanied by a pair of matching swag draped urn form pastile burners on corresponding white marble bases. 26 cm wide x 35 cm high (the clock) **£300-500**



- 407 An early 20th century 8-day single fusee skeleton timepiece of gothic form with a shaped and silvered chapter ring, on a circular moulded and ebonized base with a blown glass dome dust cover (AF). 23 cm diameter of base x 32 cm height overall **£300-400**



## Fine & Important European Furniture, Fine Art & Antiques, Thu, 31 March 2022 9:30

- 408 A Victorian-style blown glass clock dome. 27.5 cm wide x 38 cm height x 17 cm deep internal size **£100-150**



- 409 A late 19th century French gilt brass corniche cased carriage clock, by Richard & Cie, Paris, the enamel dial with retailer's mark of 'Howell & James Ltd To The Queen London', eight day movement, striking the hour and half hours on a gong, 13cms high **£150-250**



- 410 An early 20th-century single fusee skeleton clock of urn shape the halberd hammer chiming on a single bell, mounted on a moulded and ebonized base below an associated blown glass dome dust cover 27 cm wide x 19 cm deep at the base x 43 cm overall height of dome when in place. **£300-400**



- 411 A French 'Anglaise' brass cased 8-day chiming mantle clock by Cattaneo of Paris. The white enamel dial marked in Roman Numerals and Arabic minutes and bearing the maker's name. 9.5 cm wide x 18 cm high x 8.5 deep Private collection **£150-250**



- 412 A Franz Denk of Wien single fusee skeleton timepiece with pinwheel escapement enamel chapter ring and day date and moon phase subsidiary dials. on a moulded and ebonized base under a blown glass domed dust cover. 40 cm wide x 19 cm deep at the base x 44 cm overall height of dome when in place **£800-1,000**



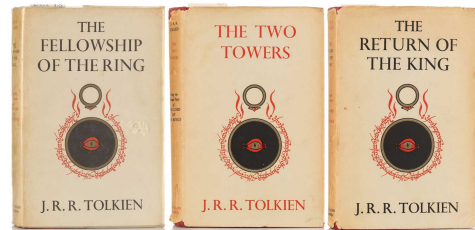


## Fine & Important European Furniture, Fine Art & Antiques, Thu, 31 March 2022 9:30

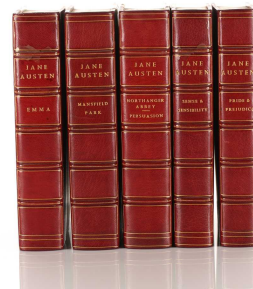
- 413 Louis VX style red tortoiseshell veneered, 8-day mantle clock, by Marti of Paris, early 20th century, with gilt metal mounts and loop handle. The movement chiming on a coil gong the white enamel dial marked in both Arabic and Roman numerals and bearing the retailers marks for Gold and Silversmiths of London. 30 cm high x 18 cm wide x 12 cm deep. **£200-300**



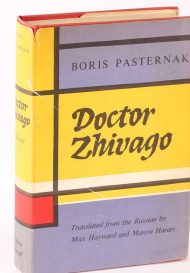
- 414 Tolkein, J.R.R. Lord of the Rings Trilogy The Fellowship of the Ring (12th imp 1962), The Two Towers (9th imp 1962) and The Return of the King (9th imp 1962), George, Allen & Unwin, all with cream dust wrappers. (Qty: 3)  
Owned by the vendor since publication. **£250-350**



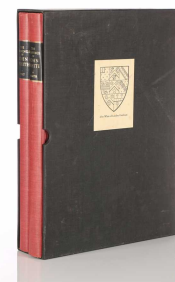
- 415 Austen, Jane; 'The Novels of..' in five volumes, *The Text Based on Collation of the Early Editions* by R. W Chapman, Clarendon Press 1923, bound by Sangorski and Sutcliffe, morocco over marbled boards. **£400-600**



- 416 Pasternak, (Boris); Doctor Zhivago, 1st edition in English, translated by Max Hayward and Manya Harari, in torn unclipped dust jacket, London 1958. **£100-150**



- 417 White (John): - Hulton (Paul) & Quinn (David Beers) The American Drawings of John White, 2 vols in cloth slipcase, folio, British Museum/North Caroline University Press, 1964 **£100-150**



## Fine & Important European Furniture, Fine Art & Antiques, Thu, 31 March 2022 9:30

- 418 Of Billy Bunter interest, The Magnet, a volume of early bound editions 1903 - 1911, October 1925 - December 1925 issues 923 - 931, The Magnet Library (1933) Nos.1297 - 1323, The Magnet (1936) Jul - Dec 1481 - 1508, and August - November 1937, 49 Howard Baker (Greyfriars Press) reissues circa 1969 - 1981, forty nine loose original copies of The Magnet 1920s-1930s, Billy Buunters Christmas - a limited edition reproduction of 400 copies, two volumes Greyfriars School - A Prospectus, Cassell & Co 1965, five volumes The Greyfriars Book Club Nos:1, 4, 13, 19 & 56, and other books relating to Billy Bunter and a small collection of early 20th century schoolboy comics **£200-300**



- 419 A rare Imperial German Navy bulkhead clock, a type used on U-Boats, the white enamel dial with Roman numerals and a subsidiary black enamel seconds dial, a retard/advance lever above 12, named for Franz Happe Kiel, with crown above M and numbered 2666, the brass case with three fixing lugs and stamped to the underside 2319368, the dial 15.5cm diameter **£300-500**



- 420 Victoria China war medal 1900, awarded to H. ELLIOTT. ACTG. SGT-MJR. R.M. NL DEPOT WEI-HAI-WEI; a France & Germany 1914-15 star, the latter awarded to 710 CPL. G.S.WYETH. R.E; a nickel plated Bosun's whistle; and a brass Christmas 1914 Princess Mary tin with card and a pencil in the form of a bullet. **£150-250**



- 421 A German Mauser bayonet, the ricasso stamped Jos. Corts Sn, 7170b, with bakelite grips and a 25cm fullered blade, in a steel scabbard with leather frog stamped Paul Kloppe, Berlin, No: I./K.G.153; A Ghurka Khukri with implements in leather scabbard; a bomb fuse and housing, 16.5cm high, two brass shell casings, 19cm & 29cm; a fantasy German Soldatenheim St Helier 3RM token, (believed produced in the 1970's) and an 18th century single grapeshot ball, 40mm **£100-150**



- 422 A collection of pre 1947 silver content coins, comprising 15 half crowns, 42 florins, 25 shillings, 9 sixpence and 6 threepence **£150-250**



## Fine & Important European Furniture, Fine Art & Antiques, Thu, 31 March 2022 9:30

- 423 A Victorian 1895 gold sovereign with soldered pendant mount.  
8.2 grams gross weight. **£200-300**



- 424 A bottle of De Laroche 60 Year Old Reserve Cognac, circa 1960s **£150-250**



- 424A The Macallan Single Highland Malt Whisky, 10 (ten) years old, 700ml in card box. **£400-600**



- 424B The Macallan Single Highland Malt Whisky, 10 (ten) years old, 700ml in card box. **£400-600**



- 425 A bottle of Feuerherd 1945 Vintage Port, together with a Porto Colheita 1965 Port. (Qty: 2) **£150-250**



## Fine & Important European Furniture, Fine Art & Antiques, Thu, 31 March 2022 9:30

- 425A The Macallan Single Highland Malt Whisky, 18 (eighteen) years old, distilled 1980, 700ml in card box. **£1,600-2,000**



- 426 A bottle of Chateau Lafite Rothschild, 1971, level at mid-shoulder, capsule good. **£200-300**



- 427 A bottle of 1960 Armagnac de Montal, together with five bottles of D.O.M. Benedictine, two bottles of Grand Marnier Cognac Brandy and a bottle of De Kuyper Cherry Brandy. **£150-250**



- 428 A bottle of 1970 Vintage Port Royal Oporto, together with further vintage Port bottles: Fonseca 1970, Offley 1958, a cased half-bottle of Taylor's Richard Smith 40 Year Old Tawny Port and a St Michael '10 Years Old'. (Qty: 4) **£150-250**



- 429 A 75cl bottle of Chateau Gilette Sauternes 1961, together with a Rieussec Sauternes 1979 and a Wine Society Fine Liqueur Cognac Seventeen Years Old (bottled 1989). (Qty: 3) **£120-180**





## Fine & Important European Furniture, Fine Art & Antiques, Thu, 31 March 2022 9:30

- 430 A collection of boxed single malt whisky and other spirits, comprising: Glenkinchie (age 10 years), Glen Moray, Balvenie Doublewood (12 years), Glenlivet (12 years), Glenfiddich Special Reserve (x2), Remy Martin Napoleon Cognac, Remy Martin Fine Champagne Cognac, Martell VSOP Medaillon Old Fine Cognac, Dimple Whisky and Drambuie. (Qty: 11) **£200-300**



- 431 A bottle of 1980 Chateau La Mission Haut Brion Graves, together with a 1985 Chateau Haute-Serre, a 1949 Corton Bressandes Charles Viénot and a 1999 Loius Coudenne Clret Bordeaux. (Qty: 4) **£200-300**



- 432 A late 19th/early 20th century ivory snooker rest (lacking pole), 7 cm x 11 cm, together with three ivory snooker balls, the largest 5 cm diameter. (Qty: 4) **£150-250**



- 433 Of slavery interest; a 19th century slave beadwork purse, an embroidered lace cushion, together with various newspapers, prints & other related ephemera. **£300-500**



- 434 A collection of eight late 19th/early 20th century ivory snooker (or billiard) balls, the largest 5.2 cm diameter. **£200-300**



## Fine & Important European Furniture, Fine Art & Antiques, Thu, 31 March 2022 9:30

- 435 An ancient Egyptian bronze miniature snake coffin, late period after 600BC, of rectangular form, the top cast with a coiling snake, with original receipt of purchase from B A Seaby Ltd, 1983, 5.5cm; and a similar bronze box/coffin, the top cast with a lizard, circa 4th - 1st century BC, (*ex Moustaki collection, exported Egypt 1949 under licence*), 5.3cm **£150-250**



- 436 A collection of three Chinese Government bonds, comprising 5% Reorganisation Gold Loan of 1913 (x 2), and 5% Hukuang Railways Singing Fund Gold Loan of 1911, the largest 54 cm x 35 cm, each framed and glazed. (Qty: 3) **£100-150**



- 437 A TT & H Ltd 1918 Telescope, and a 'Dollond London' signalling scope, together with a three draw brass and black leather-clad telescope, a Miniature brass telescope, and assorted straps and cases. **£200-300**



- 438 A collection of eight late 19th/early 20th century ivory snooker (or billiard) balls, the largest 5.3 cm diameter. **£200-300**



- 439 A Victorian painted Police short truncheon, with crowned cipher above a cartouche inscribed 'Police', with rib turned grip, the pommel stamped 'Field Holborn 233', and a William IV mahogany and brass two drawer telescope, inscribed 'Bancks & Son, Inst Makers to His Majesty, 119 New Bond St, London, the lens 4cm dia, with brass lens cap, 56cm extended **£100-150**



## Fine & Important European Furniture, Fine Art & Antiques, Thu, 31 March 2022 9:30

- 440 A collection of eight late 19th/early 20th century ivory snooker (or billiard) balls, the largest 5 cm diameter. **£200-300**



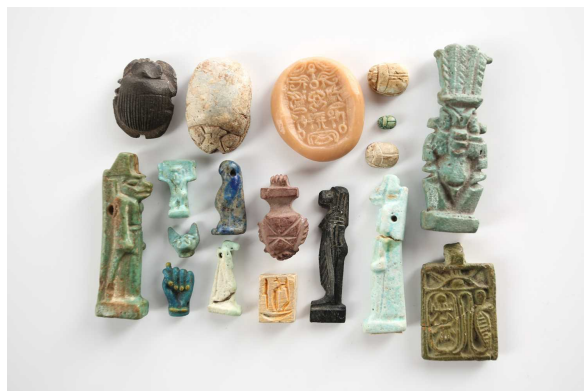
- 441 A collection of eight late 19th/early 20th century ivory snooker (or billiard) balls, the largest 5.5 cm diameter. **£200-300**



- 442 19th-century Russian school, icon of the Virgin and Child, tempera on board, 30 cm x 23 cm. **£150-250**



- 443 A collection of ancient Egyptian antiquities, comprising a faience amulet of Bes, Ptolemaic period, purchased from B A Seaby Ltd, 1986, 5.7cm; a composition amulet of Sakhmet, Ptolemaic period, 4.8cm, a late Dynastic heart shape amulet, circa 715 - 332 BC, 2.4cm; a white steatite scarab, depicting a hunting scene, 2nd Intermediate Kingdom, 1759 - 1539 BC, (ex *Mustaki Collection*) 1.3cm; a further white steatite scarab and a miniature blue faience scarab, a small blue faience head of Bastet, a Lapis lazuli amulet of Tuart, Late period after 1000 BC, 2.2cm; a small faience amulet of Tuart, 2.3cm, a blue and yellow faience hand form amulet, modelled with a ring, Ptolemaic period, 1.1cm; a black flat back glass figure of Tuart, Ptolemaic period, not after 30BC, 4.2cm, and other items Bes amulet with the original receipt of purchase. Lapis amulet of Tuart with the original receipt of purchase from B A Seaby Ltd, 1984. **£200-300**



## Fine & Important European Furniture, Fine Art & Antiques, Thu, 31 March 2022 9:30

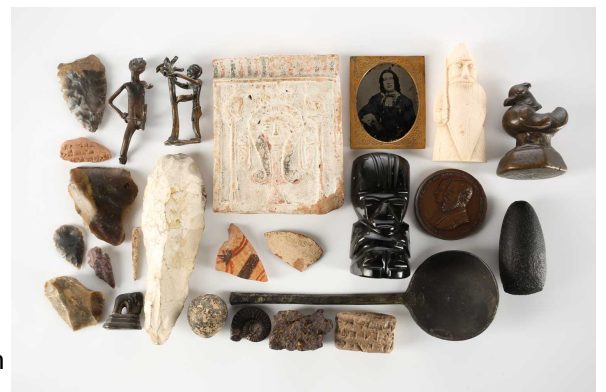
- 444 An early 20th century Broadhurst Clarkson & Co four draw telescope, 60mm objective lens, in tan leather case with carry strap, 109 cm extended, together with another similar example by the same maker, 107 cm. (Qty: 2) **£250-450**



- 445 Three Egyptian Faience Ushabti, comprising a 'Wab Priest', circa 900 BC, the turquoise glaze body with black painted headpiece and hieroglyphics to the front, a painted bag on the rear, 10.7cm; a figure/amulet of the Hippopotamus goddess Taurt, late period 500BC, a lappet wig and a well moulded mane down her back, a break and small loss at the rear where a suspension loop has been (some breakages still evident), 8.3cm; and a light turquoise faience ushabti, 12.5cm; and a small fragment of cloth in a glazed frame, a label to the reverse reads 'Egyptian Cotton Mummy Wrappings, Faience Amulet, c1300 BC, an ink inscription reads 'Tomb of Ra\*\*\* of Thebe' From the private collection of a deceased estate. The figure of Tuat with the original receipt of purchase from B A Seaby, 1984. **£300-500**



- 446 A collection of antiquities and later objects of interest, to include a black stone polished axehead, circa 3000BC, from near Lake Chad, South Sahara, 6cm; a Cunieform clay tablet and tablet sherd, 4cm & 3.4cm; an Ashante bronze gold weight, modelled as a man scraping bark from a tree, 5.8cm; a further Ashante figural gold weight, 7.3cm, a Burmese Hintha/Hamsa duck weight, 6.5cm, a small bronze weight cast as an elephant on stepped base, 2.5cm; a Persian clay relief moulded panel, 10.5 x 8.6cm; a collection of flint arrow heads and other flint tool, a lump of meteorite, a fossilised ammonite, a 17th century pewter spoon, the bowl with touchmarks; a bronze Merchant Taylor School medal, 1875; and an obsidian bust of an Aztec, 8cm



All from a private Bedfordshire collection.

The axe head purchased from The Ancient World (Bernard C Pickard) in 1973.

The Ashante gold weight of the man and tree purchased from BA Seaby Ltd in 1981

A note states the origins of the flint axeheads and tools as derived from the Gunnersbury Museum, Cissbury Hill Fort in Essex and Brettenham in Norfolk. **£150-250**

- 447 A reproduction James Purdey & Sons enamel shield-shaped shop display or advertising sign, 'By Royal Appointment to H.M. The Queen - J. Purdey & Sons Ltd - Gun & Rifle Makers - London, - England - Audley House, South Audley Street, 52 cm x 39 cm. **£200-300**





## Fine & Important European Furniture, Fine Art & Antiques, Thu, 31 March 2022 9:30

- 448 A French 'Selmer Series 10' clarinet, in fitted case. **£200-300**



- 449 Arthur Wellesley, Duke of Wellington, (1769-1852), a signed letter, dated December 6th 1809, together with a signed photograph of the actor Henry Irving (1838-1905). (Qty: 2) **£150-250**



- 450 A signed document by Vittoria Emanuele III (1869-1947), former King of Italy, together with a Benito Mussolini postcard. **£150-250**



- 451 A Gandharan stucco head of Buddha, 2/3AD, Afghanistan, on a wood base, 16.5cm overall; a South East Asian carved stone bust of Shiva, on a wood base, 14.5cm overall; A Syro-Hittite terracotta bust of a deity, circa 2 BC, with bird like features, on a perspex mount, 6cm overall; and a small Pre Columbian standing figure, on perspex base, 6.4cm  
The private collection from a deceased estate. **£300-500**



- 452 A Stanley Fuller cylindrical calculator, with mahogany and brass fittings, in original case with label and instruction manual, 43 cm long **£150-250**



## Fine & Important European Furniture, Fine Art & Antiques, Thu, 31 March 2022 9:30

- 453 Taxidermy: a group of four birds, to include a tawny owl, (36 cm high), a parakeet, a sparrowhawk with prey (each on a naturalistic base), and a thrush. (Qty: 4) **£200-300**



- 454 A large Russian velvet and gold thread altar cloth, 218 cm x 98 cm together with further similar textiles. **£200-300**



- 455 A collection of eight late 19th/early 20th century ivory snooker (or billiard) balls, the largest 5.4 cm diameter. **£200-300**



- 456 Taxidermy: two mounted heads, an African antelope and a fox, each on wooden backs, the antelope 70 cm high. (Qty: 2) **£150-250**



- 457 A King Super 20 Saxophone, engraved 'The H.N White, Cleveland, O', numbered 415062, in fitted case (lacking the neck and mouthpiece). **£200-300**



## Fine & Important European Furniture, Fine Art & Antiques, Thu, 31 March 2022 9:30

- 458 A Bacon's Excelsior Terrestrial table globe, 12" model, on turned wooden stand, 45 cm high. **£200-300**



- 459 A collection of antiquities, comprising a Roman bronze Camulodunum Type V Fibula, known as a Dolphin brooch, circa 50 - 150AD, 4.3cm; a Celtic bronze matching Woad grinding set, circa 1st century BC/AD, of boat shape with ball terminals and a crescent form pestle (*found Norfolk*); a middle bronze age dagger blade, circa 2200BC, 22.5cm, a Roman legionnaire's bronze short sword amulet, 4cm; a Roman phallus pendant and medallion, each 3.5cm; a Roman bronze eagle medallion and two silver coins, 18mm & 14mm dia; a 15th century Pilgrims badge of St Leonard, 3.5cm, a Celtic bronze pestle, 7.3cm, a Bronze brooch in the form of a swimming turtle, 3cm, and two arrowheads  
The Fibula with the original receipt of purchase in 1974 from The Ancient World ( Bernard C Pickard). **£200-300**



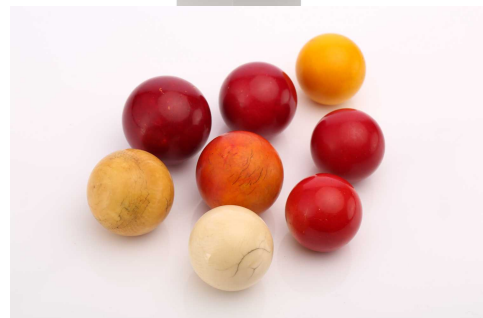
- 460 A set of six early 19th century painted glass windows, depicting humorous characters, contained in two later wooden frames, 31 cm x 49 cm. **£150-250**



- 461 An Egyptian seated bronze figure of the scribe Imhotep, 26th dynasty, 630 - 525 BC, the figure with a papyrus scroll in his hands resting on his lap, his feet on a square base, 10cm, on a later ebonised wood stand, 12.5cm overall  
A private collection from a deceased estate. Purchased from B A Seaby Ltd, 1985, for £470. **£400-600**



- 462 A collection of eight late 19th/early 20th century ivory snooker (or billiard) balls, the largest 5.3 cm diameter. **£200-300**



## Fine & Important European Furniture, Fine Art & Antiques, Thu, 31 March 2022 9:30

- 463 A collection of eight late 19th/early 20th century ivory snooker (or billiard) balls, the largest 5.2 cm diameter. **£200-300**



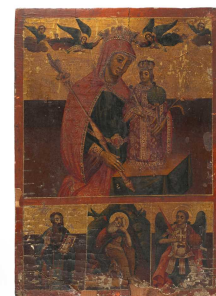
- 464 Roman antiquities, comprising a gold ring, 2/3rd century AD, the bezel applied with the cowed figure of Telesphorus, size O; a pair of Roman attributed gold earrings, 2/3 AD, a Romano - British brooch in the form of a running dog, circa 2 AD, with yellow & blue enamel decoration, 3.7cm; a Roman bronze miniature hand, cast holding a ball between the fore and middle fingers, 3.7cm, two carnelian intaglios and three rings, two of which with intaglios in carnelian and a polished hardstone depicting Aesculapius **£200-300**



- 465 A collection of eight late 19th/early 20th century ivory snooker (or billiard) balls, the largest 5.2 cm diameter. **£200-300**



- 466 A Russian icon, 18th/ early 19th century, the Virgin and Child with four angels above the saints' St George, St Nicholas and the prophet Elias, gesso and tempura on wood panel, 38.5cm x 27.7cm  
From a private Bedfordshire collector. **£150-250**



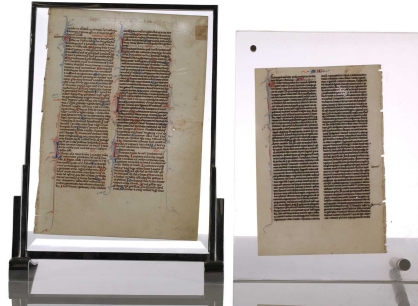
- 467 A Khmer bronze warrior bangle, with dragon head terminals, the scaly spine flanked by bands of 'S' scrolls and floret heads, interior diameter 7.5cm, outer diameter 12cm; and three Indonesian Tumbok/ Kris, each with characteristic foliate carved hilts, one mounted in carved horn, with single brass binding to scabbard, 27cm overall, the larger Kris with eight brass bindings to the scabbard, 35cm overall, the shorter Kris with excessive curved blade and carved ring handle grip, 18cm overall **£150-250**





## Fine & Important European Furniture, Fine Art & Antiques, Thu, 31 March 2022 9:30

- 468 Two early illuminated bible pages on vellum, 13th - 14th century, principally in black ink with red and blue highlights and decorations, the smaller page possibly William De Brailes of Oxford, 15cm x 10.5cm & 18.6cm x 13cm (Qty: 2)  
A private Bedfordshire collector. **£100-150**



- 469 A Roman bronze figure of a horse, 2nd century AD, with right foreleg raised, standing on a rectangular integral base with short legs, 6cm high, 5.1cm wide, on later perspex base, 7.5cm high overall  
A private collection from a deceased estate. With the original purchase of receipt from Spink & Son Ltd, May 1970. **£300-500**



- 470 Two vintage Mobo lithographed tin plate rocking horses. **£100-150**



- 471 A pair of WWII CF41 7X Naval Binoculars by Barr & Stroud (1945), together with a pair of 'Kershaw & Son' binoculars, a pair of 'Carl Zeiss' Jena Jenoptem 8x30, and two empty leather binocular cases. **£200-300**



- 472 A collection of Roman and other antique oil lamps and pottery, to include a Tunisian red pottery oil lamp, circa 2 AD, with moulded decoration depicting a central altar flanked by trees with entwining snakes, stamped to the underside LMVNSVC, purchased 1984 from B A Seaby Ltd, 9.5cm dia; a Roman Arretine footed bowl with impressed Planta Pedis mark, 11.5cm dia; a terracotta oil lamp decorated with a standing goddess within a laurel wreath border, with relief moulded makers mark to the side CRE, 11.5cm, three other oil amps and a wet jar and collection of 42 Roman coins  
A private Bedfordshire collector. **£150-250**



## Fine & Important European Furniture, Fine Art & Antiques, Thu, 31 March 2022 9:30

- 473 A collection of eight late 19th/early 20th century ivory snooker (or billiard) balls, the largest 5.1 cm diameter. **£200-300**



- 474 A collection of 19th century and later bisque-headed dolls, to include examples by Armand Marseille and Schoneau & Hoffmeister, some with closing eye movements and all clothed. **£300-500**



- 475 A rare set of six matching Roman surgeon's instruments, 4/5th century AD, to include a scalpel, a tissue hook, a retractor/forceps, a helix probe and two scoops, each with part decorated and plain shaft terminating in an acorn finial, tallest 19.5cm, and a mixed collection of Roman surgical/embalming instruments and other implements, probably 2/3rd century AD. An accompanying note to the set of six states that they were found in Turkey during the construction of a road in the early 1990's, found within a stone sarcophagus within an inhumation burial within a rock catacomb. **£300-500**



- 476 A collection of eight late 19th/early 20th century ivory snooker (or billiard) balls, the largest 5 cm diameter. **£200-300**



## Fine & Important European Furniture, Fine Art & Antiques, Thu, 31 March 2022 9:30

- 477 A brass and steel Davy type Miners safety lamp, with hinged brass domed top with suspension hook, with sliding reflector and mesh gauze on a brass base with screw off bottom, unmarked, 22.5cm; a safety lamp by E Thomas & Williams Ltd, Cambrian Type No:13 'Midget', 22cm; a further safety lamp stamped for Thomas & Williams, Aberdare, 24cm; a brass, chrome and steel safety lamp by E Thomas & Williams Ltd, Cambrian Type No:1, 27.5cm; an E Thomas & Williams Ltd 'Cambrian Carbide' helmet lamp; a miners check pit tally for Merthyr Vale Colliery, a Miners brass pocket watch protector, the thick bevelled glass top unscrewing and housing a late Victorian silver cased pocket watch by Jones & Jones, Porth; a n early 19th century colour print of Stephenson's and Davy safety lamps; a late 19th century Gymmer Colliery porcelain cup

From a private Bedfordshire collector **£100-150**



- 478 Taxidermy: a late 19th century group of exotic birds, in a naturalistic setting, under a glass dome, 61 cm high. **£200-300**



- 479 Two pairs of WWII era CF41 7X naval binoculars by Barr & Stroud, each painted with a broad arrow and one in a leather carry case. (Qty: 2) **£200-300**

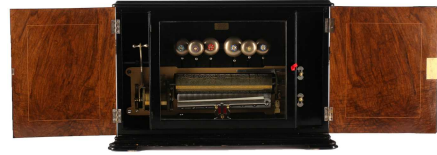


- 480 After Ferdinand Preiss, an Art Deco table lighter, modelled as a female dancer on a rectangular marble base, 27 cm high, together with a large chrome photograph frame, similar period, with swivel movement, 44 cm high x 36 cm wide. **£80-120**



## Fine & Important European Furniture, Fine Art & Antiques, Thu, 31 March 2022 9:30

- 481 A fine late 19th-century Swiss musical box, by Mojon Manger and Company, serial number 28143 and stamped 'MMC', playing eight airs with six tuned bells, each of these with enamel flower decoration, zither attachment fitted over the comb. The movement is fitted vertically in a buffet style case, with twin doors and brass carrying handles, the figured walnut doors with inlaid mother of pearl decoration, 42.5 cm high x 65 cm wide x 25 cm deep. Private collection. Restoration receipts, insurance valuations and other related paperwork present. **£1,000-1,500**



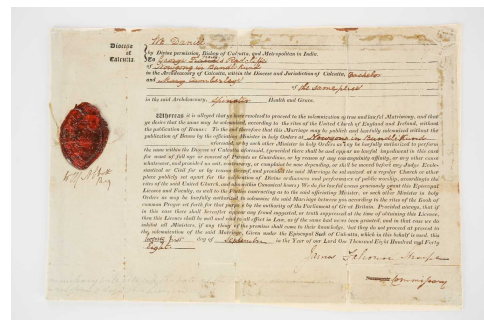
- 482 A collection of eight late 19th/early 20th century ivory snooker (or billiard) balls, the largest 5.2 cm diameter. **£200-300**



- 483 A tin box containing a good quantity of 19th-century photograph negatives on glass, of the Scilly Island shipwrecks and flower picking industry. **£300-500**



- 484 A 19th century Indian Raj marriage certificate, 1848, for the future Lieutenant General George Travis Radcliffe (Madras Caavalry), who fought in the Indian Mutiny. **£100-150**



- 485 A double sided page from the Nuremberg Chronicle, incunable, circa 1493, Hartmann Schedel & Anton Koberger, with hand-colored illustrations Linea Imperatorum Caius Calligula, Claudius, Nero, the Stoning of St Stephen and the Conversion of St Paul, ink inscriptions in the margins, 44 x 30cm. A private Bedfordshire collector. **£100-150**





## Fine & Important European Furniture, Fine Art & Antiques, Thu, 31 March 2022 9:30

- 486 A collection of eight late 19th/early 20th century ivory snooker (or billiard) balls, the largest 5 cm diameter. **£200-300**



- 487 Namiki: Oriental fans Maki-e fountain pen and propelling pencil set, in original Asprey leather case and nib, circa 1925, the pen with Namiki "lifebuoy" lever, and collar stamped '14k', clip stamped 'NAMIKI CLIP', nib stamped 'ASPREY 14K 3', pencil with broken off clip, pen 15.5cms long **£1,000-1,500**



- 488 An early 19th-century album or scrap book, containing many paintings, drawings, engravings and prints, to include a gouache in the manner of Jacob George Strutt (1790-1964), figures in an Italianate landscape, the album 37 cm x 29 cm. **£300-500**



- 489 Three Verlys France vases, two 'Les Palmettes' with stylised handles, one in mauve coloured glass, the other in amber coloured glass, both 19 cm high x 17 cm diameter, with a 'Feuilles De Bananier' with large banana leaf styled handles and decoration in satin (frosted) glass, 26.5 cm high x 34.5 cm diameter.

Verlys' Art Glassware 1937 Catalogue Numbers: 'Les Palmettes' - 1275, 'Feuilles De Bananier' - 1816. Featured during Pierre d'Avesn's, a student of LaLique's, tenure as manager of Verlys France. **£200-400**



- 490 A scarce Victorian figural Parian wall scone thought to be Minton. with oval moulded wall plate with the figure of the muse Urania holding a classical oil lamp before her and clasping a globe to her chest, within a guilloche border. Bearing an inscription to the rear side suggesting that it is believed that it may have been exhibited in the Great Exhibition in London 1851. 38 cm overall height x 30 cm overall width  
See image details for the full inscription  
Lot 15, Sotheby's Ariane Dandois sale, New York, 25 October 2007. **£2,000-3,000**



## Fine & Important European Furniture, Fine Art & Antiques, Thu, 31 March 2022 9:30

- 491 A blanc de chine porcelain figure of the classical Russian ballerina, Galina Ulanova, as in the ballet 'The Dying Swan', unmarked. **£100-200**



- 492 A Crown Devon Fieldings "Daisy-Bell" novelty musical pottery jug, Harry Lauder "I love a lassie" Robert Burns "Auld Lang Syne" and John Peel musical jugs. 24 cm high the tallest. (Qty: 4) **£100-200**



- 493 A scarce Lladro large figure of a Moor, wearing a hooded blue cloak, a dagger on his hip, on an oval base, 46 cm high **£150-200**



- 494 A collection of fifteen Royal Crown Derby "Old Imari" (1128) 21 cm side plates together with a candlestick of the same pattern now fitted as a table lamp. 41 cm high the actual lamp. **£200-300**



- 495 A Santa Maria Pueblo blackware vase, by Margaret Garcia, of squat ovoid form, etched signature to base, 9 cm high. **£100-200**



## Fine & Important European Furniture, Fine Art & Antiques, Thu, 31 March 2022 9:30

- 496 Two 19th century Continental porcelain scent bottles, of square form with stoppers, each with hand-painted decoration, the tallest 22 cm. (Qty: 2) **£200-300**



- 497 An H&R Daniel porcelain teaset, comprising teapot, covered sucrier, cream jug, slop bowl and ten cups and saucers (with two additional cups), with hand-painted decoration. **£200-300**



- 498 A pair of Continental porcelain figural candlesticks, late 19th century, possibly Volkstedt, mounted with the figures of a lady and gallant both holding flower baskets on scroll decorated domed covers. Bearing fork mark to the bases on associated gilt wooden stands. 37 cm high. Private collection **£200-300**



- 499 Three Verlys France bonbonnières (sweet boxes), 'Les Chrysanthèmes' in amber coloured glass with moulded chrysanthemum decoration, 4 cm high x 17 cm diameter, 'Les Papillons' in cobalt tinted (blue) glass decorated with press-moulded butterflies, 5 cm high x 17 cm diameter, 'Les Bleuets' in amber coloured glass with relief mould of a sheaf of wheat surrounded by blooming flowers, 5 cm high x 17 cm diameter. Verlys' Art Glassware 1937 Catalogue Numbers: 'Les Chrysanthèmes' - 1233, 'Les Papillons' - 1130, 'Les Bleuets' - 1131. Featured during Pierre d'Avesn's, a student of LaLique's, tenure as manager of Verlys France. **£200-400**



- 500 A pair of 18th century style Rudolstadt Volkstedt figural porcelain candelabra, 19th/20th century with centrepiece bowl each fitted with a removable four sconce upper section with decorative applied flowers, accompanied by a German porcelain circular table centre of similar age, with flared and pieced basket top, set with three winged cherubs and encrusted with summer blooms and fruit on a scroll base. The candelabra 26 cm wide x 52 cm high, the table centre 31 cm diameter x 30 cm. Private collection **£300-500**



## Fine & Important European Furniture, Fine Art & Antiques, Thu, 31 March 2022 9:30

- 501 An Austrian Amphora style porcelain bottle vase, the bulbous body decorated with a portrait of a woman's head surrounded by flowers against a wooded ground, the slender neck decorated with foliage with gilt highlights. The base numbered 467 7 and painted with a cobweb. 28.5 cm high. **£200-300**



- 502 A pair of Continental porcelain baluster vases and covers, 19th /20th century probably Dresden. Each cover with an 18th century figure of a young lady and gallant above painted cut blooms and applied floral swags, bearing blue underglaze marks to the base. approx 22 cm diameter x 38 cm high overall **£200-300**



- 503 A Continental hand painted cabinet plate in a gilt bronze rococo surround. The sole of the plate entitled "l'écureuil" (The Squirrel) painted with a mother in an interior opening a squirrel cage whilst her daughter looks on, bearing interlaced "Ls" and a date letter "L" on the reverse. 35 cm wide x 51 cm high Private collection **£70-100**



- 504 A late 19th century Russian Gardner Porcelain figure, a female semi-clothed and sitting on a stool, removing her stocking, the whole on a marble-effect rectangular base, inscribed '237' to base, 22 cm high x 15 cm x 12 cm. 'Kanter Collection' sticker to base. See Sotheby's sale 12/4/11 (New York), Lot 374, for another example of the figure. **£200-400**



- 505 Meissen porcelain figural group of Cupid, Venus and a watchful hound, late 19th/ 20th century. Seated on a rocky base with applied flowers painted in colours bearing cross sword marks to the base. Together with an early 20th-century porcelain figure group of a lady gazing at her sleeping child. 19.5 cm wide x 25.5 cm high x 14.5 cm deep the Meissen group private collection **£150-250**





## Fine & Important European Furniture, Fine Art & Antiques, Thu, 31 March 2022 9:30

- 506 Three Verlys France coupes, two 'Les Orchidées' with base mould decoration of flowering Orchids, one in opalescent glass, and the other in amber coloured glass, both 7 cm high x 35 cm diameter, together with a 'Les Raisins' in satin (frosted) glass with press-moulded decoration of grape bunches on base and handles, 7 cm high x 39 cm diameter. Verlys' Art Glassware 1937 Catalogue Numbers: 'Les Orchidées' - 1097, 'Les Raisins' - 8622. Featured during Pierre d'Avesn's, a student of LaLique's, tenure as manager of Verlys France. **£200-400**



- 507 A pair of 19th century Neo-Classical cut glass and ormolu candelabra bases in the manner of Osler of Birmingham. Each of urn form with diamond cut finials, associated lustre hung collars above architectural stepped plinths with stylized fan cutting. 46 cm overall height x 17 cm approx width **£150-250**



- 508 A Lladro Thai figure, a kneeling girl, model 2069, 43 cm. **£150-200**



- 509 Two Verlys France coupes, 'Les Nāïades' in gris (smoked) glass with press-moulded decoration of mermaids circling the border, 6.5 cm high x 39 cm diameter, the 'Scalare' in satin (frosted) glass with relief mould of an Angel fish, 6.5 cm high x 32.5 cm diameter, along with an oval centrepiece 'Les Poissons' in satin glass decorated with press-moulded fish and two handles styled as fish-tails, 11.5 cm high x 50 cm long x 18 cm wide. Verlys' Art Glassware 1937 Catalogue Numbers: 'Les Nāïades' - 1288, 'Scalare' - 1813, 'Les Poissons' - 964. Featured during Pierre d'Avesn's, a student of LaLique's, tenure as manager of Verlys France. **£200-450**



- 510 A suite of Waterford crystal glass, approximately fifty pieces, to include a water jug, two bowls, champagne coupes, tumblers and assorted wine glasses. **£200-300**



## Fine & Important European Furniture, Fine Art & Antiques, Thu, 31 March 2022 9:30

- 511 A mixed group of St Louis glass items, to include a Thistle pattern water jug (a/f), 30 cm high, a wine decanter (in original box), 26 cm, and three small dishes, 10 cm diameter. (Qty: 5)  
**£150-250**



- 512 A collection of Verlys France glassware including, 'Les Danseuses' in gris coloured (smoked) glass with relief mould decoration of figures dancing, 20.5 cm high x 17.5 cm diameter, 'Les Arceaux' coupe in mauve coloured glass, 8 cm high x 38 cm diameter, and a 'Les Arceaux' vase in amber coloured glass, 13 cm high x 12 cm diameter, both with decoration of flower like hoops in concentric rings, and a 'Préhistoire' coupe in amber coloured glass with sunk relief of extinct animals on the underside of the border, 6 cm high x 35 cm diameter.  
Verlys' Art Glassware 1937 Catalogue Numbers: 'Les Danseuses' - 1128, 'Les Arceaux' coupe - 1180, 'Les Arceaux' vase, 2248, 'Préhistoire' 1866. Featured during Pierre d'Avesn's, a student of LaLique's, tenure as manager of Verlys France. **£200-350**



- 513 Three Verlys France coupes, 'Les Marguerites' in opalescent glass with daises on moulded base and silver rim, 6.5 cm high x 34.5 cm diameter, 'Les Nénuphars' in gris (smoked) coloured glass with relief moulded water lilies, 7 cm high x 35.5 cm diameter, and 'Les Pavots' in satin (frosted) glass with poppies on moulded base, 7 cm high x 35 cm diameter. (Qty: 3)  
Verlys' Art Glassware 1937 Catalogue Numbers: 'Les Marguerites' - 1253, 'Les Nénuphars' - 1259, 'Les Pavots' - 1121. Featured during Pierre d'Avesn's, a student of LaLique's, tenure as manager of Verlys France. **£200-300**



- 514 A 20th century Le Verre Français cased and etched cameo glass slender ovoid vase, possibly by Charles Schneider with stylised peonies decoration, 42 cm high x 17 cm wide. **£600-800**



## Fine & Important European Furniture, Fine Art & Antiques, Thu, 31 March 2022 9:30

- 515 Two Verlys France coupes 'Les Canards Sauvages', one opalescent glass with relief moulded decoration, the other gris coloured (smoked) glass with moulded base, together with a Verlys France cendrier 'Le Canard' in mauve coloured glass, Opalescent coupe 4 cm high x 36 cm diameter, Gris coupe 6.5 cm high x 34.5 cm diameter, Mauve cendrier 10.5 cm high x 15 cm long x 9.5 cm wide.

Verlys' Art Glassware 1937 Catalogue, 'Les Canards Sauvages' No. 835 and 'Le Canard' No. 1285. Featured during Pierre d'Avesn's, a student of LaLique's, tenure as manager of Verlys France. **£200-400**



- 516 Three Opalescent Verlys France items, 'Les Griffes' rounded vase decorated with a ring of relief moulded claws around the neck reaching down towards the base and a belt of repeating geometric style claws running across the lower half, 16.5 cm high x 16 cm diameter, 'Les Cabochons' flaring vase with raspberry bush moulded pattern including textured protrusions in three symmetrical rings, 17 cm high x 17.5 cm diameter, 'La Fortune' coupe with base mould of four feathered wings between the tips of a four point star, 7 cm high x 37 cm diameter (Qty: 3)

Some small marks, wear to bases consistent with use, otherwise in good condition.

Verlys' Art Glassware 1937 Catalogue Numbers: 'Les Griffes' - 1252, 'Les Cabochons' - 1157, 'La Fortune' - 1274. Featured during Pierre d'Avesn's, a student of Lalique's, tenure as manager of Verlys France. **£250-500**



- 517 A Royal Worcester porcelain figure 'The Water Carrier', puce mark to base and numbered 125, 49 cm high. **£150-250**



- 518 A collection of Verlys France glassware including, the 'Colerette Ovale' coupe centrepiece in satin (frosted) glass with leaf design border, 7.5 cm high x 44 cm long x 38 cm wide, 'Les Larmes' coupe in cobalt tinted glass with press-moulded tear-drops encircling the centre, 7 cm high x 45.5 cm diameter, 'Les Barrettes Perlees' sutout de table (table centre dish) in gris (smoked) coloured glass with decorated border, 4.5 cm high x 40 cm long x 25 cm wide, a 'jardinière rectangulaire' in amber coloured glass with geometric border decoration, 4 cm high x 28 cm long x 14 cm wide, and a 'Plat Entrelacs' in gris (smoked) coloured glass with moulded base decoration, 3.5 cm high x 25.5 cm long x 25.5 cm wide. (Qty: 5)

Verlys' Art Glassware 1937 Catalogue Numbers: 'Colerette Ovale' - 1812, 'Les Larmes' - 1041N, 'Les Barrettes Perlees' - 1286, 'jardinière rectangulaire' - 1254, 'Plat Entrelacs' - 1296. Featured during Pierre d'Avesn's, a student of LaLique's, tenure as manager of Verlys France. **£200-350**





## Fine & Important European Furniture, Fine Art & Antiques, Thu, 31 March 2022 9:30

- 519 A late 19th century Russian Gardner porcelain figure, 'Old Pilgrim Woman', in a hunched over position with walking stick and basket, on a naturalistic green base, red printed mark to base and impressed number '186', 16.5 cm high. **£200-400**



- 520 A 20th century Russian porcelain figure of a girl in traditional dress, with mirror, blue printed mark to base, 20.5 cm high. **£100-200**



- 521 A set of twelve 20th-century dinner plates, each with hand-painted central motif depicting the United States' 'E Pluribus Unum' [Out of One...Many] motif, each 26 cm diameter. **£150-250**



- 522 A set of four St Louis style champagne coupes, with gilt decoration to the rims, 9.5 cm high x 9.7 cm wide, together with two modern and boxed Lalique crystal glass dishes, 15 cm diameter. (Qty: 6) **£150-250**



- 523 A set of six St. Louis cut crystal wine glasses, 16.5 cm high, together with two Waterford cut glass whiskey decanters and a celery vase with etched grape and vine decoration, 25 cm high. (Qty: 9) **£150-200**





## Fine & Important European Furniture, Fine Art & Antiques, Thu, 31 March 2022 9:30

- 524 A Continental porcelain oval wall mirror, 19th century possibly Dresden, the mantle comprised of a pair of winged putti holding a floral garland above a frame of tongues of acanthus and tied laurel wreath painted in colours. Together with two similar but smaller porcelain dressing table mirrors with an easel stand, a continental porcelain table centre and a porcelain figure of a gentleman 26 cm wide x 34 cm high (the primary item). (Qty: 5)  
Private collection **£150-200**



- 525 Large Meissen "Kakiemon" pattern 755(?) extensive dinner and tea service. Together with a Meissen "Kakiemon Tiger" part tea and coffee service, both 20th century. The dinner service comprised:  
12 x 25 cm diameter dinner plates  
12 x 21.5 cm diameter dessert plates  
12 x 16 cm side/tea plates  
2 x sauceboats  
2 x square vegetable dishes  
2 x oval 25.5 cm dishes  
5 x meat plates 28.5 cm - 49 cm long  
12 x 24.5 cm soup plates  
1 x large soup tureen and cover 39 cm wide  
1 x vegetable tureen and cover and one further cover **£300-500**



- 526 A 20th century Le Verre Francais cased and etched cameo glass globular vase, possibly by Charles Schneider with stylised lily pad and lotus decoration, 36 cm high x 20 cm diameter. **£600-800**



- 527 A late 20th century Lalique French crystal 'Concarneau' ashtray, depicting swirling fish with bubbles, signed to base, 15.5 cm wide. **£100-150**



- 528 Two Verlys France press-moulded sculptures titled 'Le Faisan', one in opalescent satin glass and the other in gris coloured (smoked) satin glass, both 15 cm high x 46 cm long x 6.5 cm wide. (Qty: 2)  
Verlys' Art Glassware 1937 Catalogue, No. 1107. Featured during Pierre d'Avesn's, a student of LaLique's, tenure as manager of Verlys France. **£200-400**

